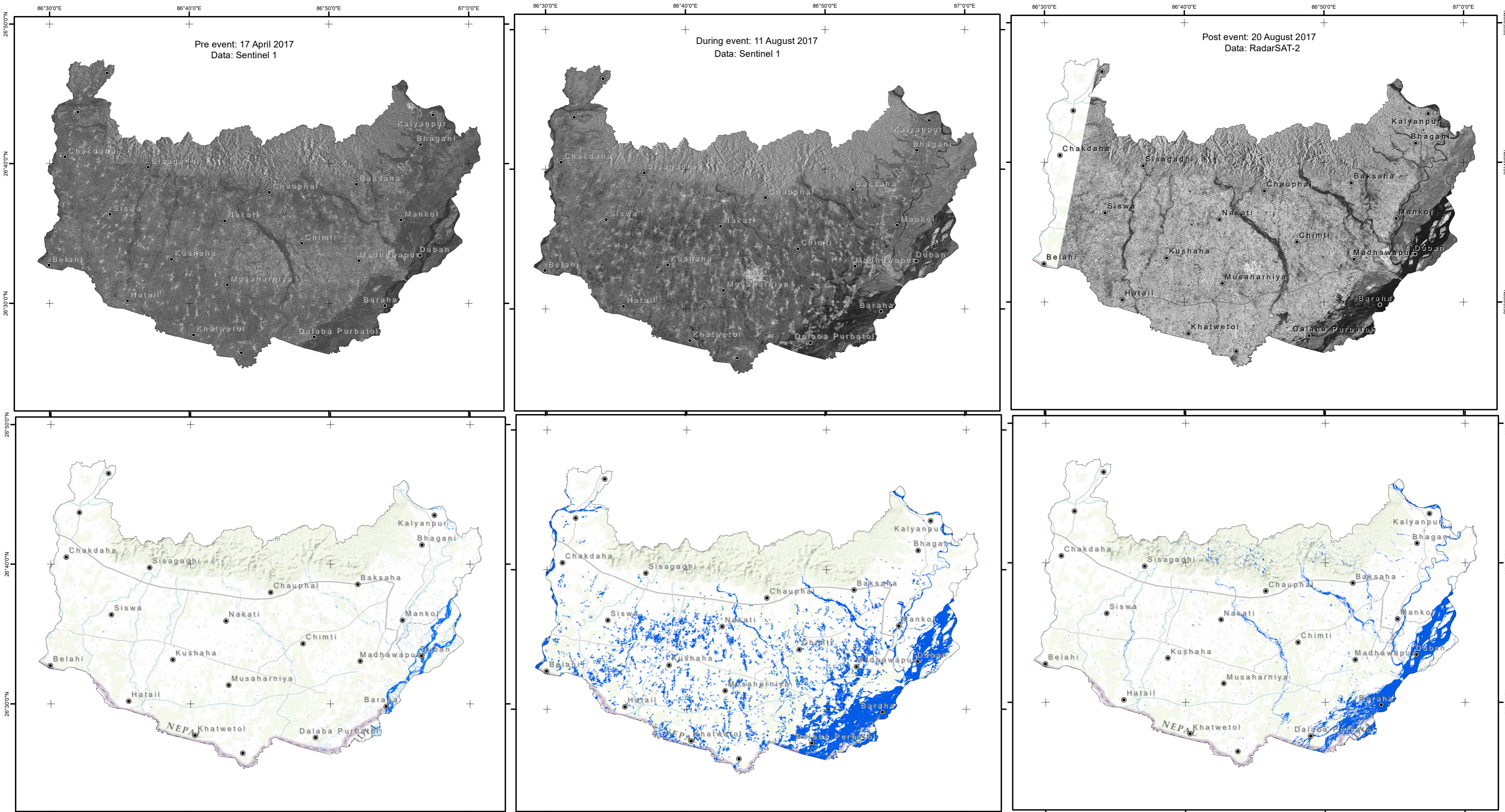
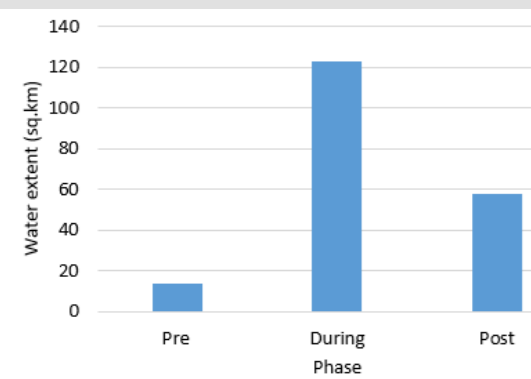


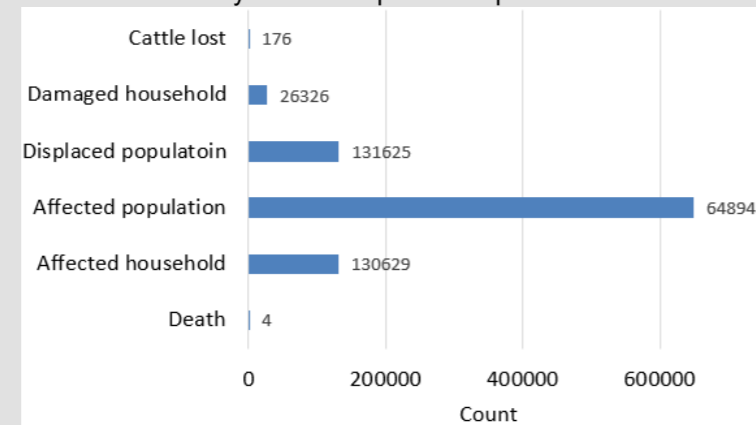
# Pre, during and post analysis of water extent in Saptari district of Nepal for August 2017 flooding.



Change in water extent in different phases of flood event.



Summary of flood impact in Saptari district



### Situation analysis:

This map presents water bodies mapped using SAR image of three different dates: pre-, during-, and post-event phases. The statistics of area of water bodies indicate receding flooding situation. This fact is also visually discernable. The area of the water bodies is clearly highest on 11 August during the flooding.

The flooding is receding by days but water logged areas are areas of concern from the point of disease outbreak.

Image source: European Space Agency  
Canadian Space Agency

IRA data: Nepal Red Cross Society (NRCS)

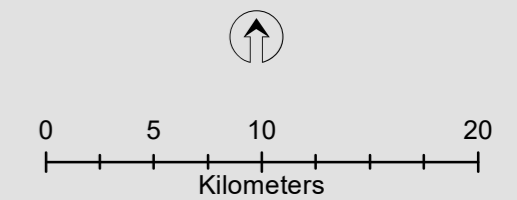
Map prepared by: ICIMOD

Map generated: 22 August 2017

Coordinate system: WGS\_UTM\_Zone45N

### Legend

- Settlements
- District boundary
- Water bodies



### Disclaimer:

The information presented here is purely based on remote sensing analysis without ground validation. The discrepancies in the information may arise from use of different satellite sensors.