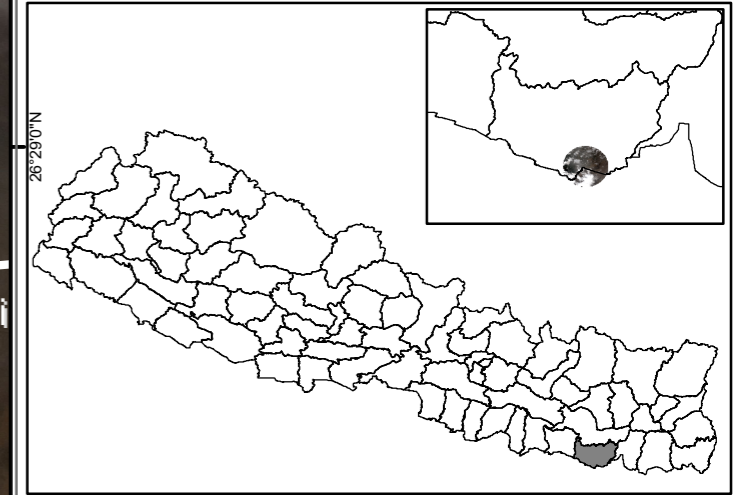


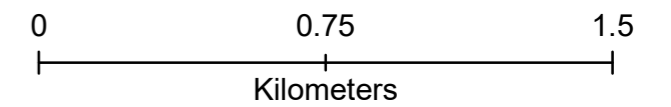
Map showing water logged area of part of Saptari district, Nepal.  
(as of 17 August 2017)

Glide: FL-2017-000107-NPL



Situation report::

While the flood water has receded since the peak flow, there are many pockets where trapped flood remains (within white polygons). People living close to these areas may require assistance and needs monitoring, as these area are potential for vector borne diseases.

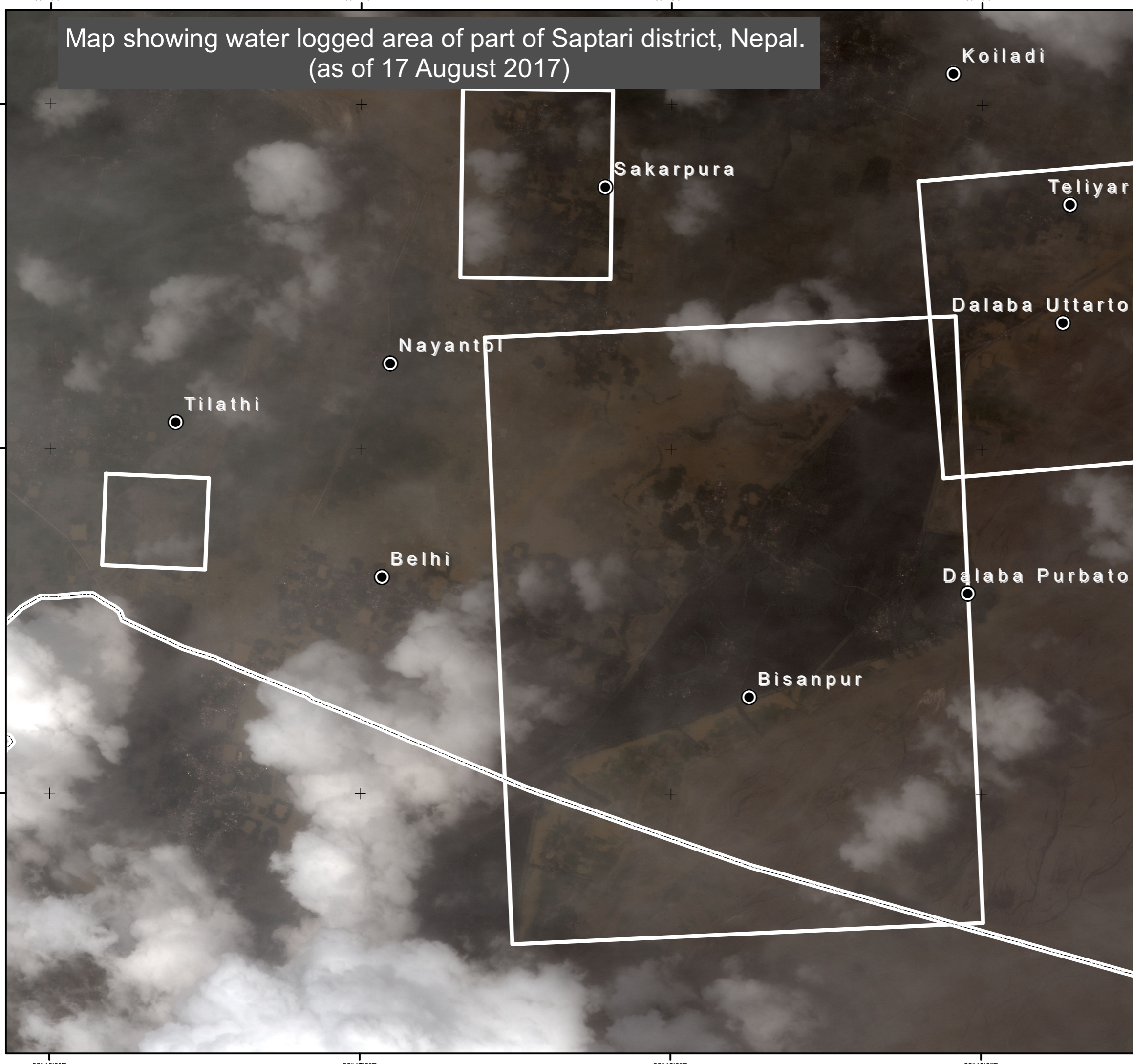


Legend

- Settlements
- International boundary
- Water logged areas

Data: Pleiades  
 Acquisition date: 16 August 2017  
 Data source: Airbus Defence and Space  
 Coordinate system: WGS\_1984\_UTM\_Zone\_45N  
 Product generated date: 17 August 2017

Disclaimer:  
 The information presented is entirely based on remote sensing derived without field validation.



86°46'0"E 86°47'0"E 86°48'0"E 86°49'0"E

26°29'0"N 26°28'0"N 26°27'0"N