



ENSURE INCLUSIVE AND EQUITABLE QUALITY EDUCATION AND PROMOTE LIFELONG LEARNING OPPORTUNITIES FOR ALL



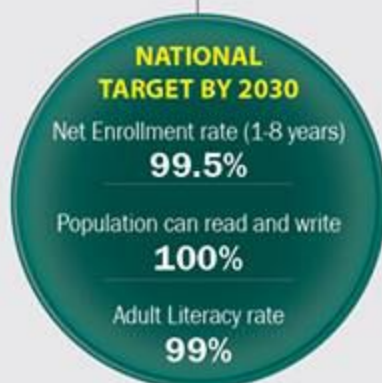
Net Enrollment rate (1-8 years) (%)



Population who can read and write (%)



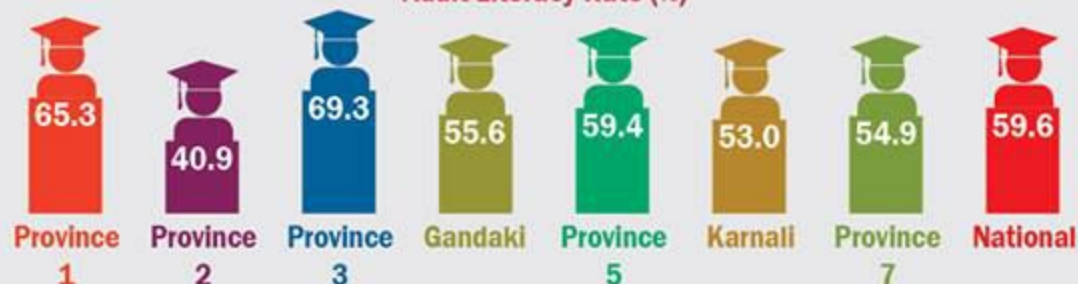
PROVINCES



PROVINCES



Adult Literacy Rate (%)



PROVINCES AND NATIONAL

Indicators	1	2	3	Gandaki	5	Karnali	7		Target 2030
Net Enrollment rate (1-8 years) (%) ¹	94.7	79.2	94.8	94.8	91.2	93.2	94.8	92.3	99.5
Population who can read and write (%) ²	70.71	51.00	66.85	70.00	71.82	59.00	61.54	65.90	100
Adult Literacy Rate (%) ³	65.3	40.9	69.3	55.6	59.4	53.0	54.9	59.6	99.0

