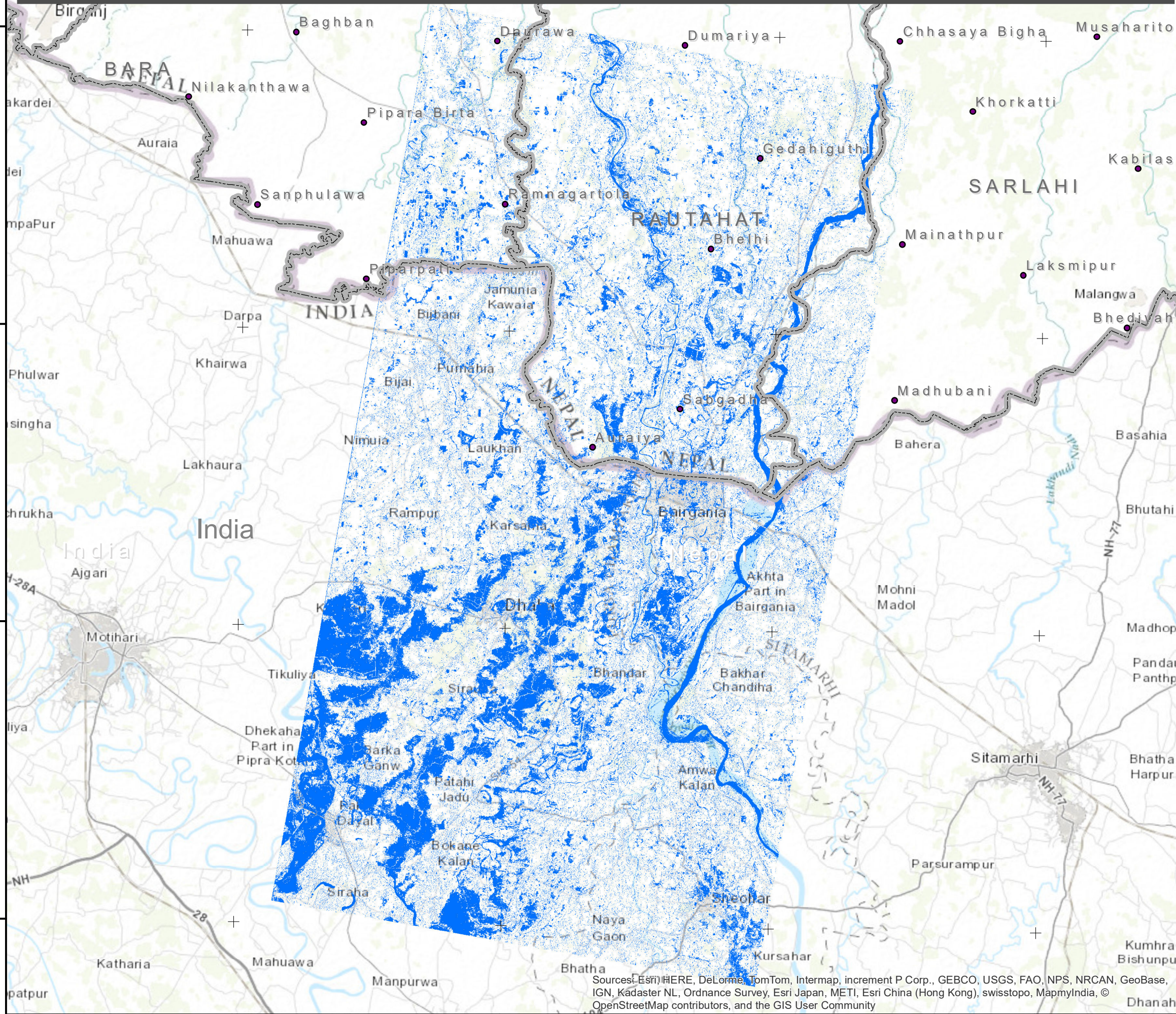
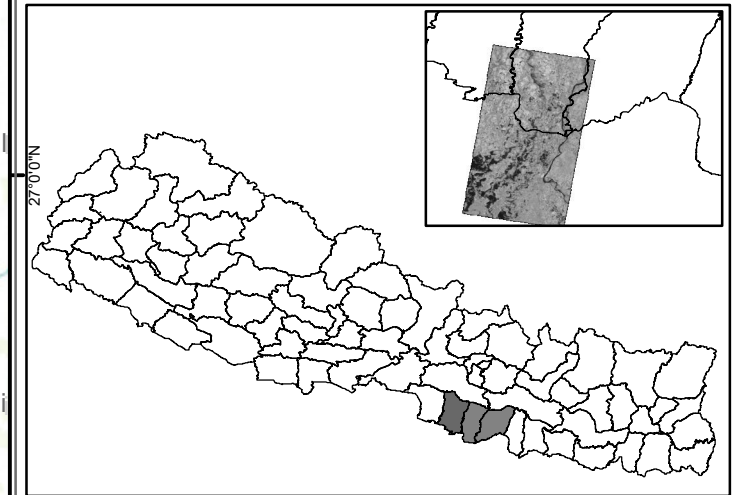


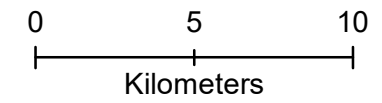
Map showing water bodies (river and flooded) of part of Bara, Rautahat and Sarlahi districts of Nepal, and Bihar state of India (as of 21 August 2017)

Glide: FL-2017-000107-NPL



Situation analysis::

Since 11 of Agust 2017 there has been incicent rainfall causing widespread flooding across the region, including Nepal and India. While the flood water has receded since the peak flow, there are many pockets where trapped flood water still remains (blue polygons).



Legend

- Settlement
- ▭ National/district boundary
- Water bodies (river and flood)

TerraSAR-X/TanDEM-X © DLR e.V. 2017, Distribution Airbus DS Geo GmbH

Data: Water bodies from TerraSAR-X
 Acquisition date: 21 August 2017
 Data source: Airbus Defence and Space
 Coordinate system: WGS_1984_UTM_Zone_45N
 Product generated date: 21 August 2017

Disclaimer:
 The information presented is entirely based on remote sensing derived without field validation.

Sources: Esri, HERE, DeLorme, TomTom, Intermap, increment P Corp., GEBCO, USGS, FAO, NPS, NRCAN, GeoBase, IGN, Kadaster NL, Ordnance Survey, Esri Japan, METI, Esri China (Hong Kong), swisstopo, MapmyIndia, © OpenStreetMap contributors, and the GIS User Community

