

# NEPAL

## KASKI AND SYANGJA DISTRICTS, GANDAKI PROVINCE

IMAGERY ANALYSIS: 04/07/2021 PUBLISHED 07/07/2021 V1.

ANALYZED AREA  
500km<sup>2</sup>

OBSERVED FLOODS  
25km<sup>2</sup>

POPULATION POTENTIALLY EXPOSED  
17,000

Province	District	Municipality	Analyzed area in cloud free zones (km <sup>2</sup> )	Flood Extent as of 4 July 2021 (km <sup>2</sup> )	Population in cloud free zones	Population Potentially Exposed to Floods	Population Potentially Exposed (%)
Gandaki	Kaski	Madi	26	0.64	3,250	140	4%
		Pokhara	265	18.64	219,160	15,800	7%
		Rupa	3	0.11	640	30	5%
Sub-total			294	19.39	223,050	15,970	7%
Gandaki	Syangja	Arjunchaupari	6	0.06	1,980	30	2%
		Phedikhola	35	0.88	5,850	220	4%
		Putalibazar	112	2.63	11,770	320	3%
Sub-total			153	3.57	19,600	570	3%
Gandaki	Tanahu	Shuklagandaki	54	2.10	8,610	490	6%
		Sub-total	54	1.63	8,610	490	6%
<b>Total</b>			<b>502</b>	<b>24.60</b>	<b>251,260</b>	<b>17,030</b>	<b>7%</b>



Satellite detected water extent over Kaski and Syangja districts, Gandaki province, Nepal as of 4 July 2021.

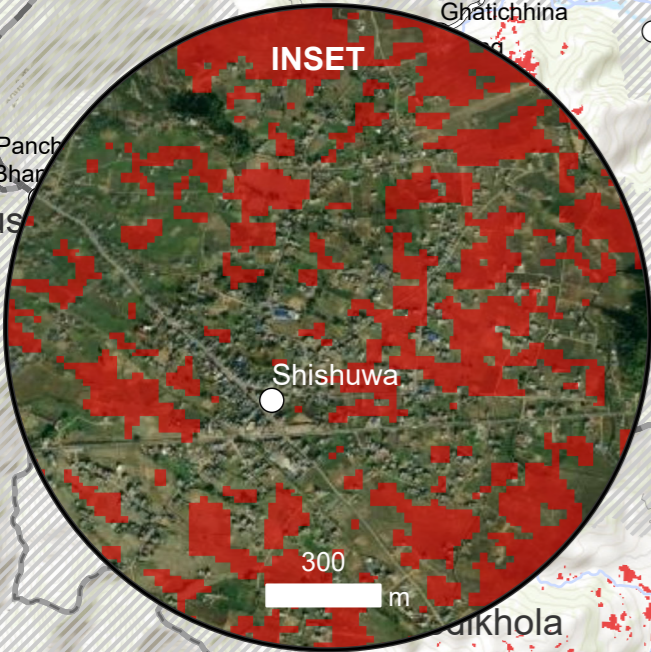
This map illustrates satellite-detected surface waters in Kaski and Syangja districts, Gandaki province, Nepal as observed from a Sentinel-2 image acquired on 4 July 2021 at 10:41 local time. Within the analyzed cloud free zones of about 500 km<sup>2</sup>, a total of about 25km<sup>2</sup> of lands appear to be flooded. Based on Worldpop population data and the detected surface waters, about 17,000 people are potentially exposed or living close to flooded areas. The potentially exposed population is mainly located in the Kaski district with ~16,000 people.

This is a preliminary analysis and has not yet been validated in the field. Please send ground feedback to United Nations Satellite Centre (UNOSAT).

### Legend

- Airport
- Village
- City/Town
- Primary road
- Secondary road
- Other road
- Municipality boundary
- District boundary
- River
- Analysis extent
- Cloud mask
- Reference water
- Satellite detected water [4 July 2021]

Map scale for A3 1: 90,000  
0 0.75 1.5 3 KM



See inset for close up view

Spatial Reference: Name: WGS 1984 UTM Zone 45N, PCS: WGS 1984 UTM Zone 45N, GCS: GCS WGS 1984, Datum: WGS 1984  
 Satellite Data: Sentinel-2, Imagery Dates: 4 July 2021 at 04:56 UTC, Resolution: 10 m, Copyright: Contains modified Copernicus Sentinel Data [2021], Source: ESA  
 Administrative boundaries: Boundary data: Survey Department of Nepal, UN Resident Coordinators Office in Nepal, HDX  
 Population data: WorldPop [2020], Reference Water: Sentinel-2/ 25 April 2021, Populated place: OpenStreetMap  
 Road data: OpenStreetMap, Waterways: OpenStreetMap, Background: ESRI World Imagery  
 Analysis: United Nations Satellite Centre (UNOSAT), Production: United Nations Satellite Centre (UNOSAT)