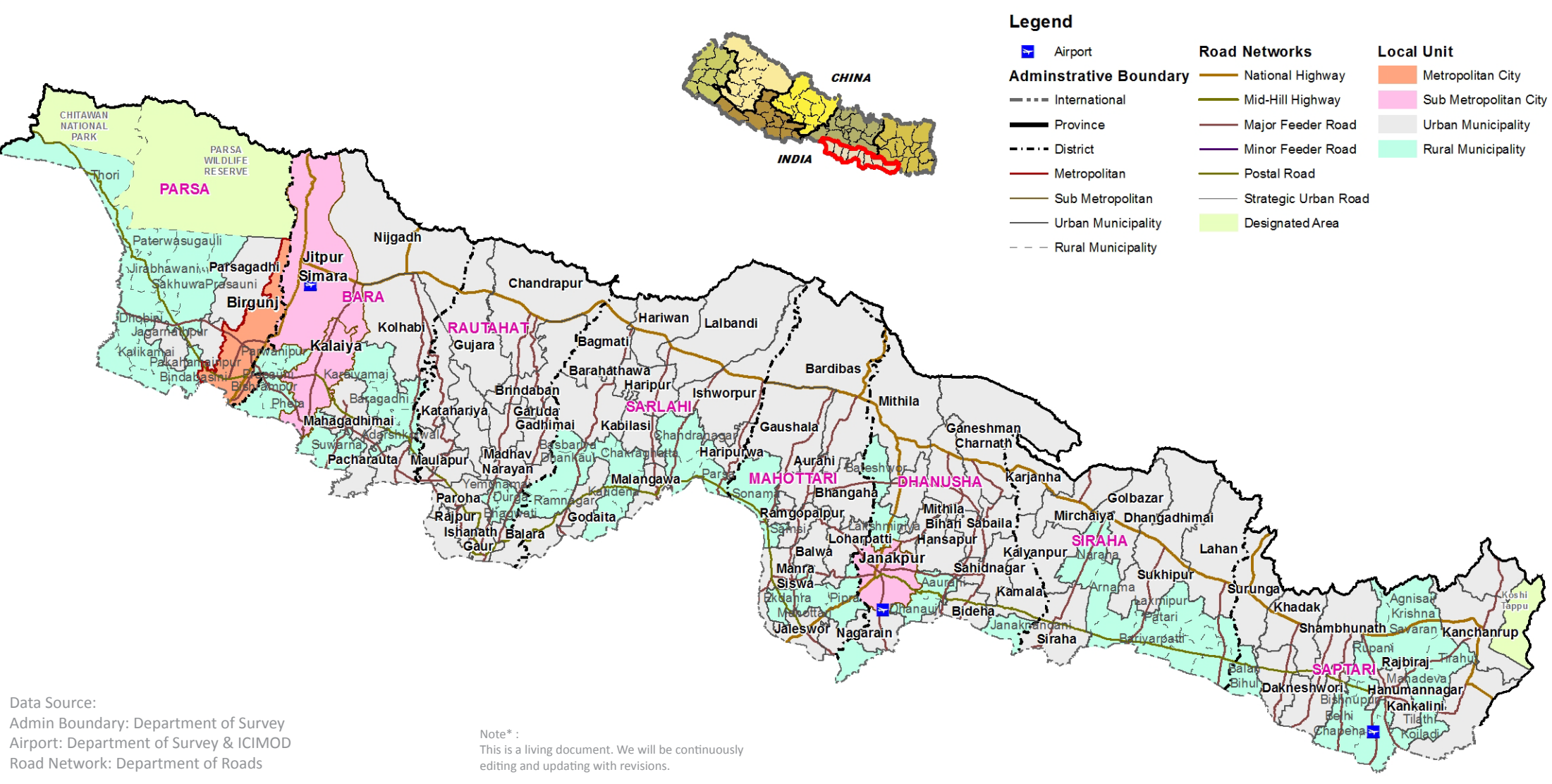
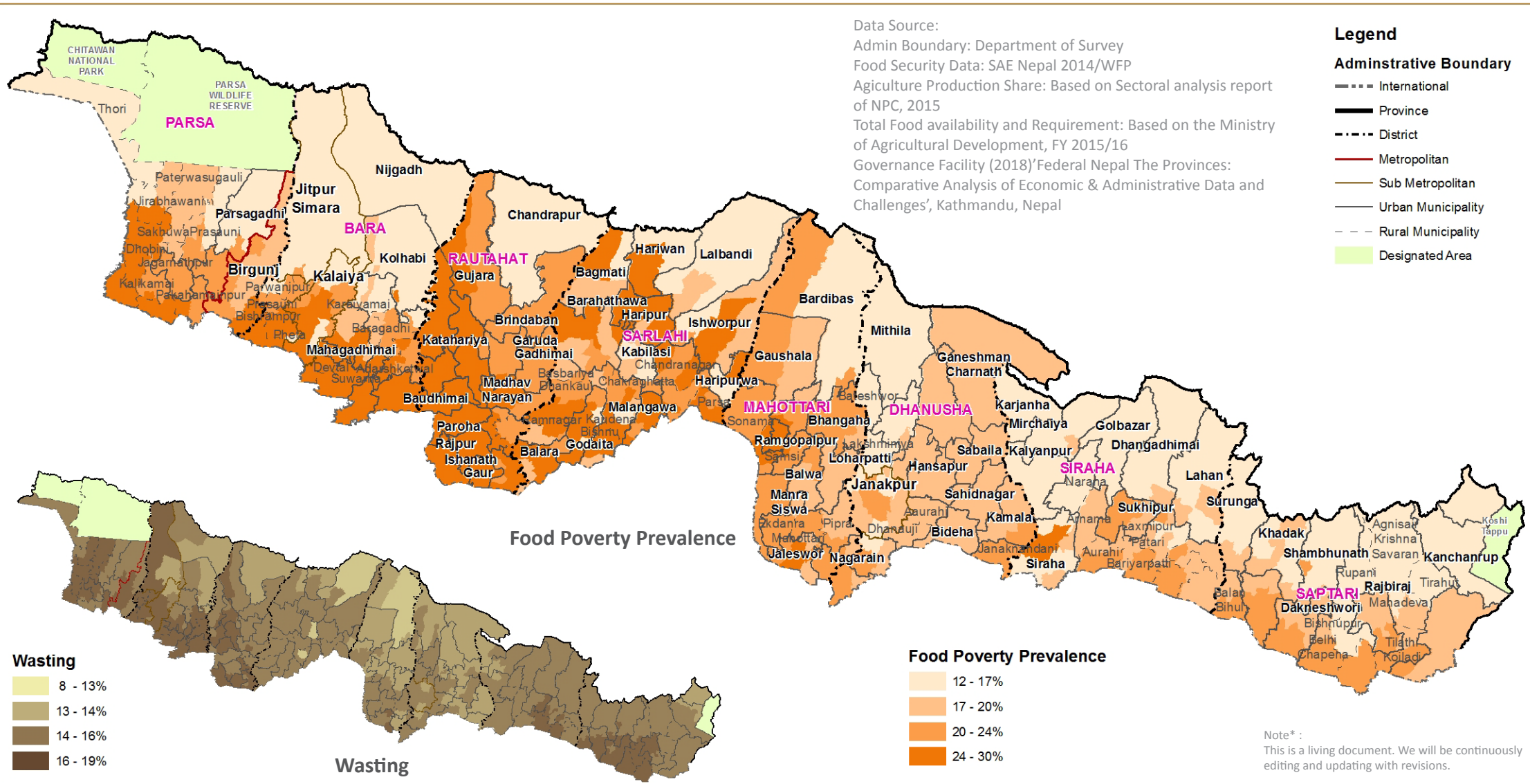


# Administrative Boundary



8	Districts	1	Metropolitan City	73	Urban Municipality	Designated Area	- Chitawan National Park - Parsa Wildlife Reserve - Koshi Tappu Wildlife Reserve
3	Sub-Metropolitan City	59	Rural Municipality				

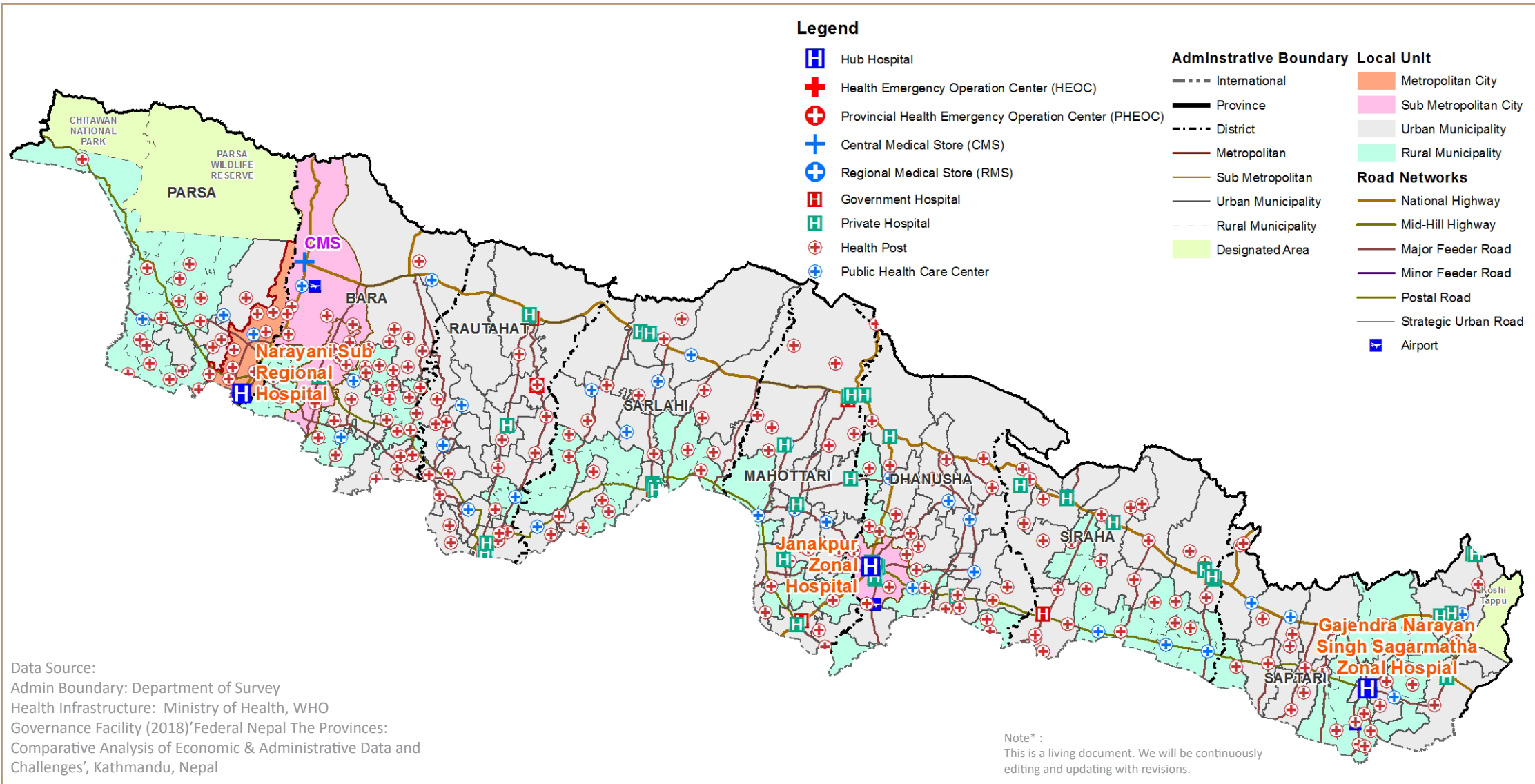
Food & Nutrition



Note\* : This is a living document. We will be continuously editing and updating with revisions.

Agriculture Production Share **12.74%**      948,640 Mt Total Available Food  
 1,060,488 Mt Food Requirement

Health Services



Total Public Health Facilities

820

168

Non-Public Health Facilities

3 Hub Hospital

13 Hospital (Public)

1 Central Medical Store

32

745

17

Primary Health Centre

Health Post

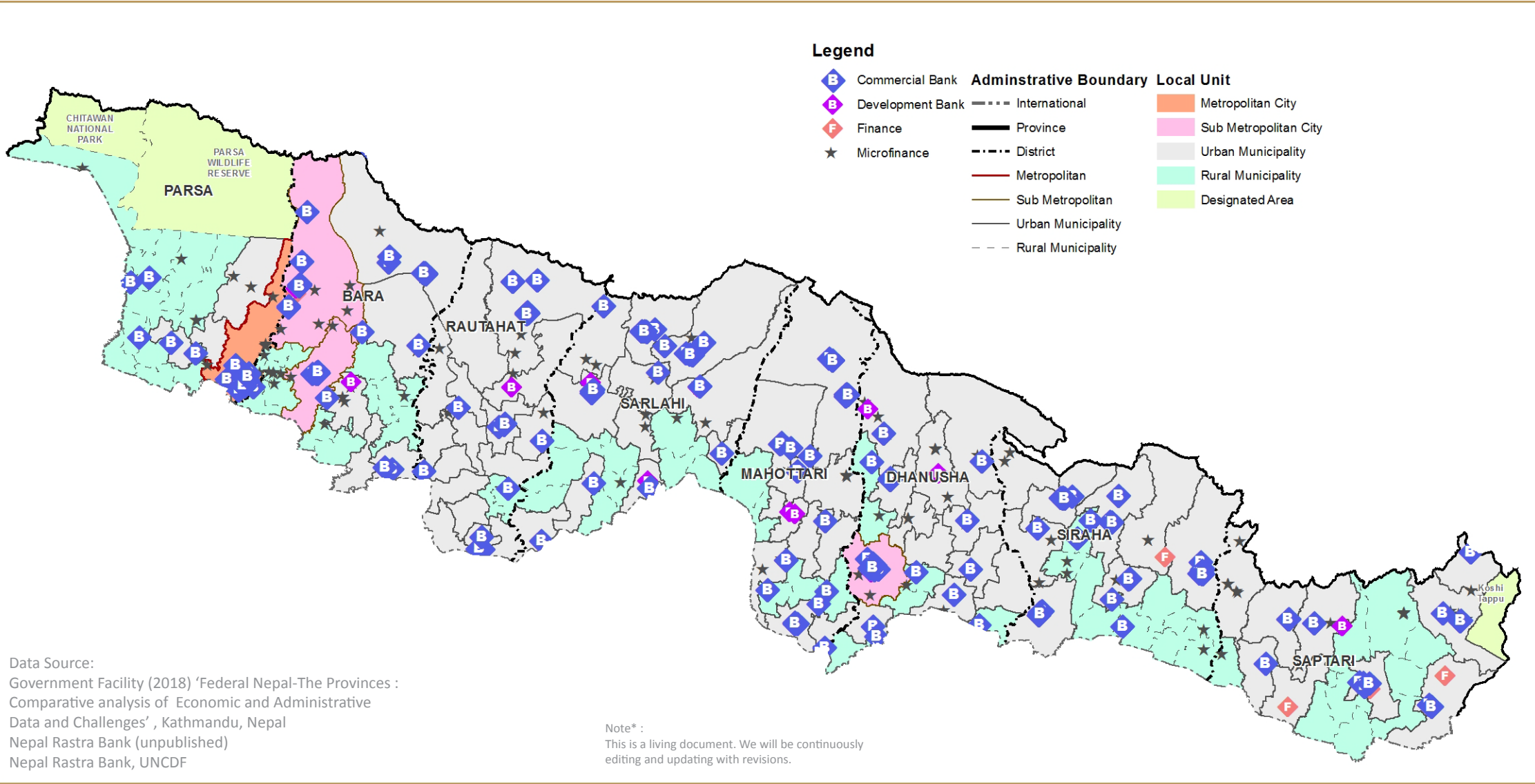
Urban Health Centre

5 Community Health Unit

8 Other Health Facility



# Financial Services



Total Financial Institutions  
**285**

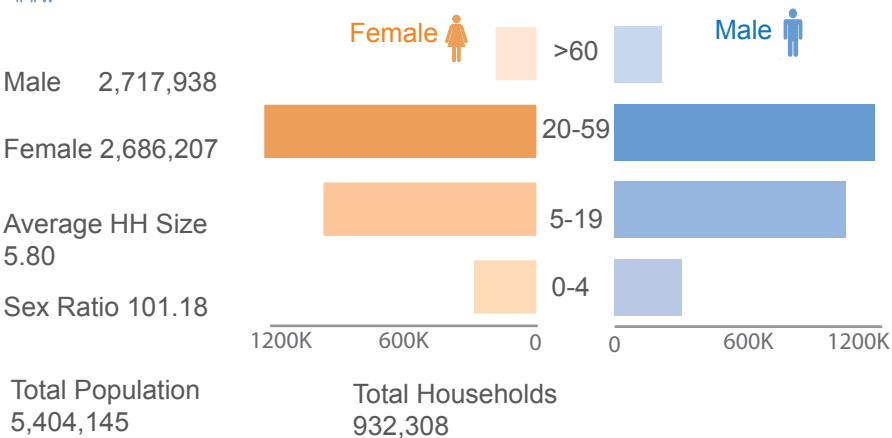
240 Commercial Banks  
 37 Development Banks

8 Finance

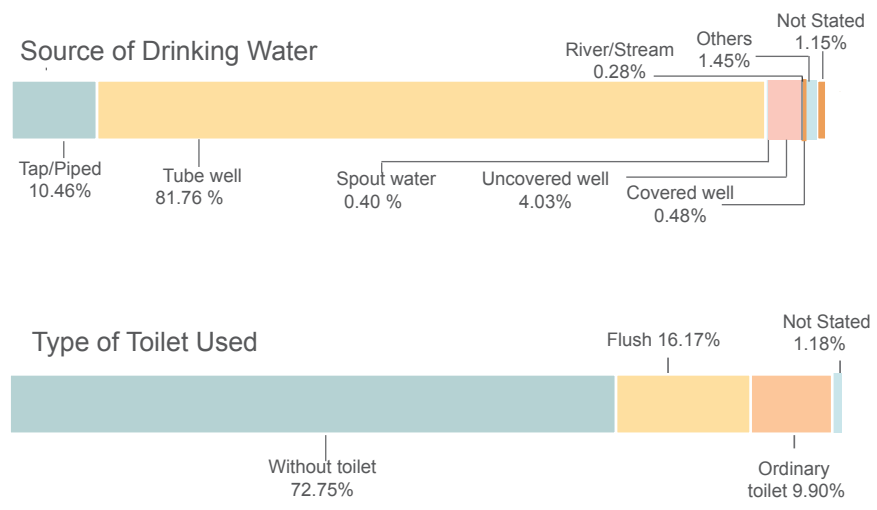
**20,937**  
 Population per Branch

as of May 2018

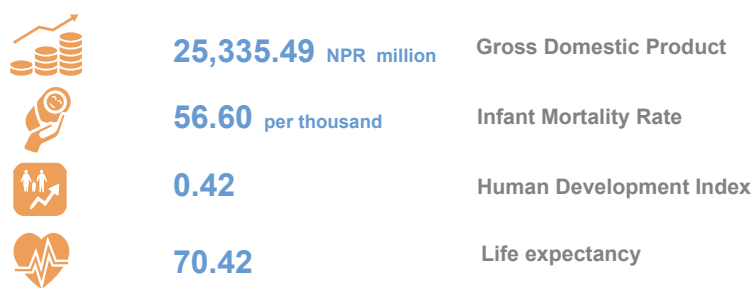
### POPULATION



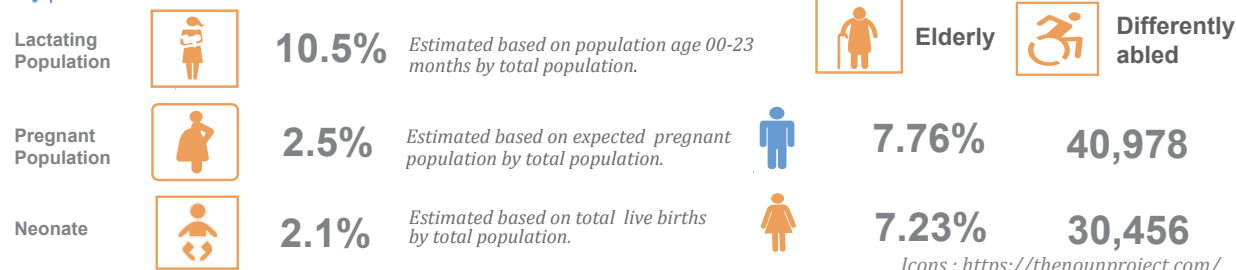
### WATER AND SANITATION



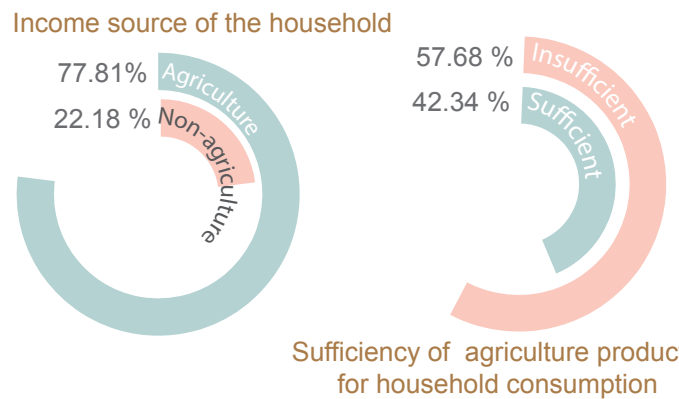
### HUMAN DEVELOPMENT INDICATOR



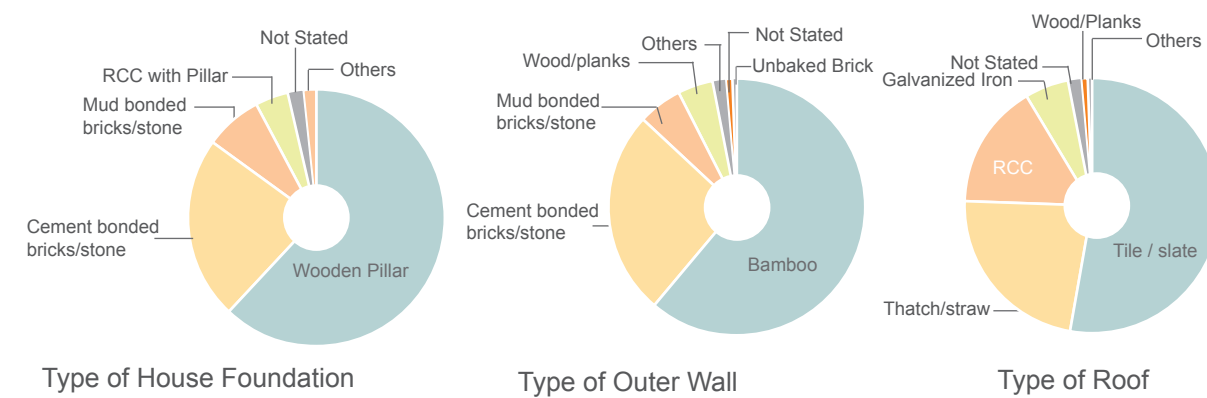
### VULNERABLE



### FOOD



### SHELTER



### EDUCATION



### Sources

Population/WASH/Differently able/Elderly/Shelter: Province Summary Population Census 2011

### Human Development/Education:

Government Facility (2018) 'Federal Nepal-The Provinces : Comparative analysis of Economic and Administrative Data and Challenges (Nepal Human Development Report, 2014 & Population Monograph of Nepal Volume II, 2014 ; Flash Report 20 16/17, DoE

### Vulnerable (Neonate, Pregnant & Lactating) :

Calculated from Annual Report, DoHS (2016/17)

Note\* : This is a living document. We will be continuously editing and updating with revisions.