

Administrative Boundary



Legend

- Airport
- Administrative Boundary**
 - International
 - Province
 - District
 - Metropolitan
 - Sub Metropolitan
 - Urban Municipality
 - Rural Municipality
- Local Unit**
 - Metropolitan City
 - Sub Metropolitan City
 - Urban Municipality
 - Rural Municipality
 - Designated Area
- Road Networks**
 - National Highway
 - Mid-Hill Highway
 - Major Feeder Road
 - Minor Feeder Road
 - Postal Road
 - Strategic Urban Road

Data Source:
 Admin Boundary: Department of Survey
 Airport: Department of Survey & ICIMOD
 Road Network: Department of Roads

Note* :
 This is a living document. We will be continuously editing and updating with revisions.

12 Districts **4** Sub-Metropolitan City **32** Urban Municipality **73** Rural Municipality **Designated Area**

- Dhorpatan Hunting Reserve
- Banke National Park
- Bardiya National Park
- Lumbini Sanskritik Development Area



Food & Nutrition

Legend

Administrative Boundary

- International
- Province
- - - District
- Metropolitan
- Sub Metropolitan
- Urban Municipality
- - - Rural Municipality
- Designated Area

Food Poverty Prevalence

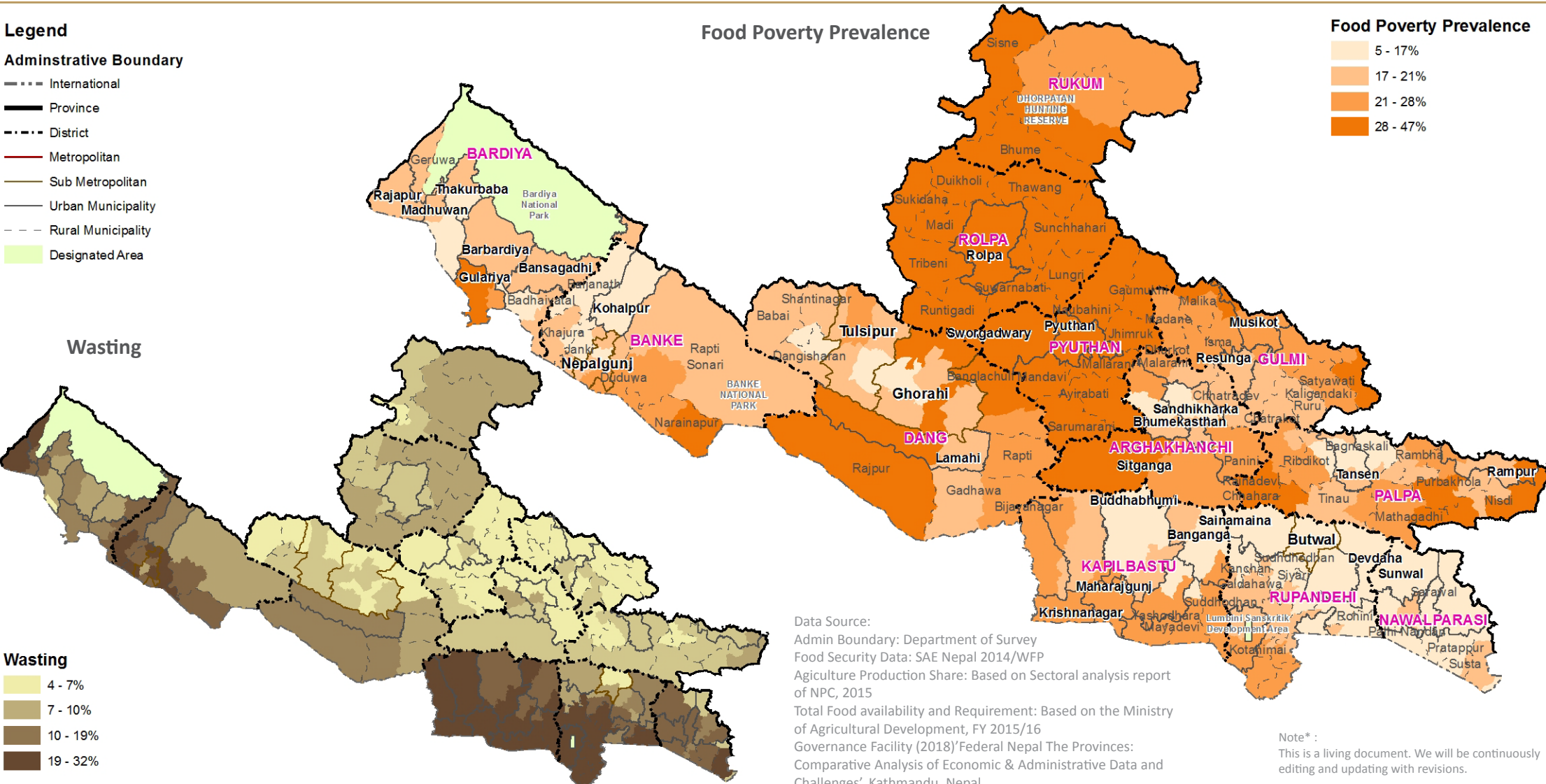
Food Poverty Prevalence

- 5 - 17%
- 17 - 21%
- 21 - 28%
- 28 - 47%

Wasting

Wasting

- 4 - 7%
- 7 - 10%
- 10 - 19%
- 19 - 32%

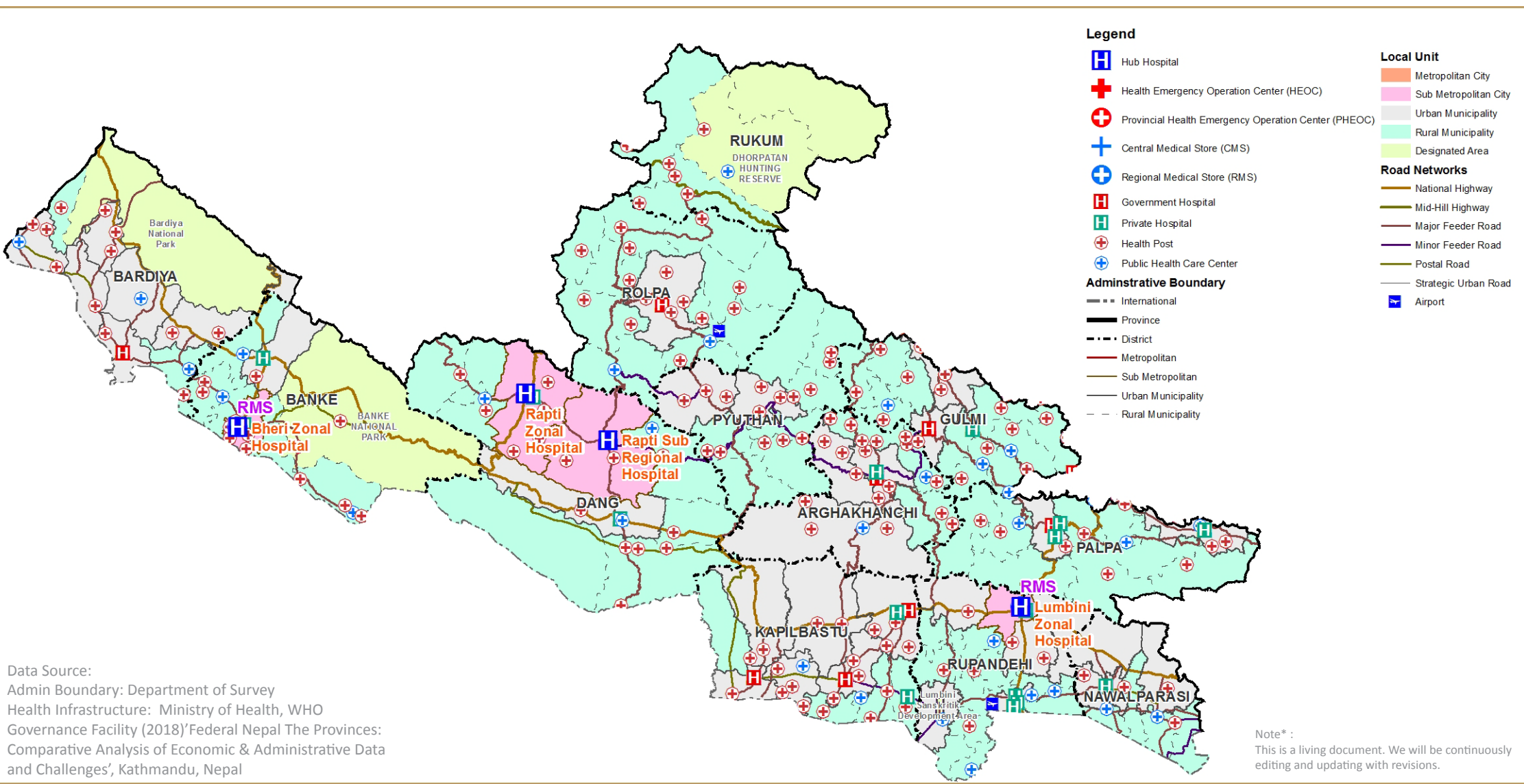


Data Source:
 Admin Boundary: Department of Survey
 Food Security Data: SAE Nepal 2014/WFP
 Agriculture Production Share: Based on Sectoral analysis report of NPC, 2015
 Total Food availability and Requirement: Based on the Ministry of Agricultural Development, FY 2015/16
 Governance Facility (2018)'Federal Nepal The Provinces: Comparative Analysis of Economic & Administrative Data and Challenges', Kathmandu, Nepal

Note* :
 This is a living document. We will be continuously editing and updating with revisions.

Agriculture Production Share **17.62%** 1,070,457 Mt Total Available Food
 905,233 Mt Food Requirement

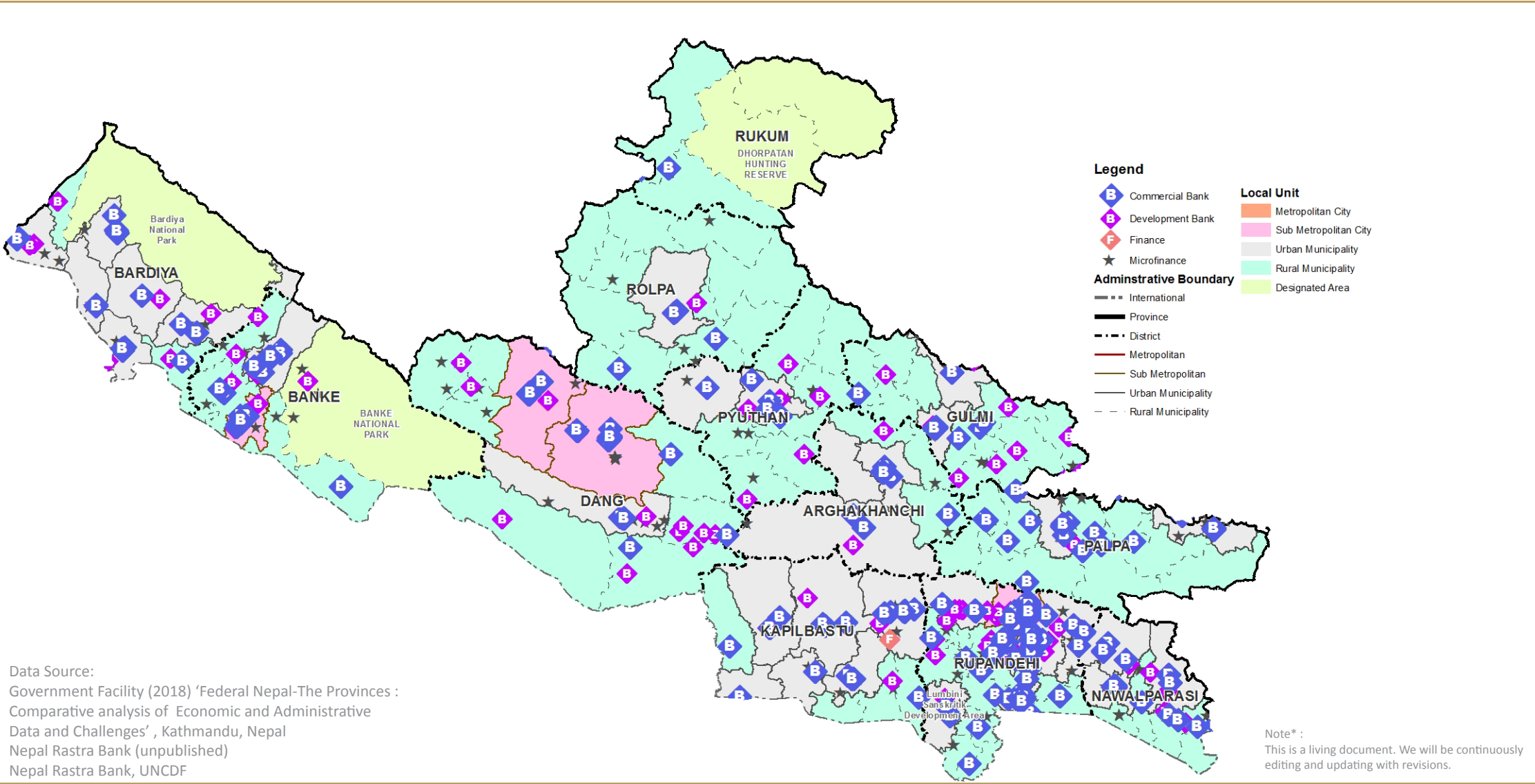
Health Services



Total Public Health Facilities	670	4 Hub Hospital	31 Primary Health Centre	15 Community Health Unit
Non-Public Health Facilities	165	18 Hospital (Public)	570 Health Post	9 Other Health Facility
		2 Regional Medical Store	27 Urban Health Centre	



Financial Services



Total Financial Institutions
624

382 Commercial Banks
 218 Development Banks

24 Finance

8659
 Population per Branch



as of May 2018

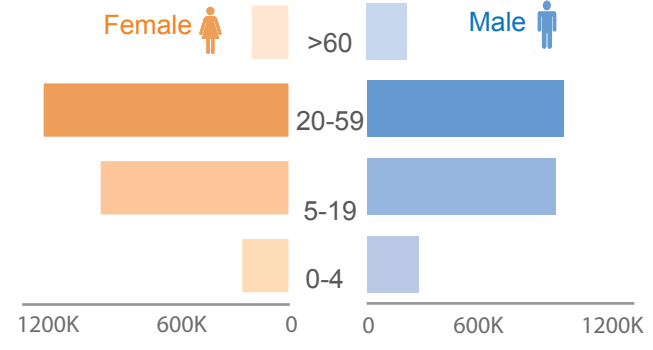
POPULATION

Male 2,140,316

Female 2,358,956

Average HH Size 5.08

Sex Ratio 90.73

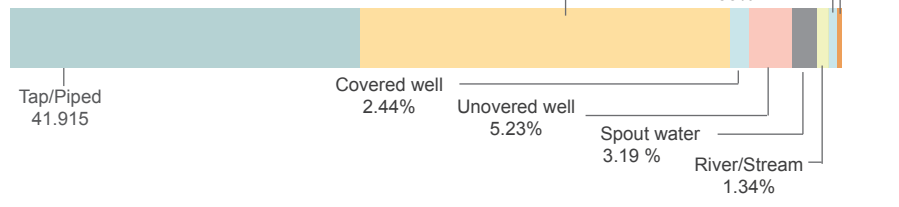


Total Population 4,499,272

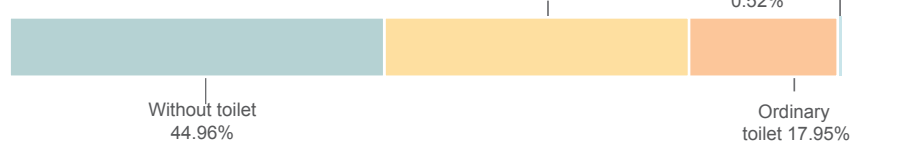
Total Households 885,203

WATER AND SANITATION

Source of Drinking Water



Type of Toilet Used



HUMAN DEVELOPMENT INDICATOR

- 15,509.78** NPR million Gross Domestic Product
- 41.28** per thousand Infant Mortality Rate
- 0.46** Human Development Index
- 67.54** Life expectancy

VULNERABLE

- 10.7%** Lactating Population *Estimated based on population age 00-23 months by total population.*
- 2.7%** Pregnant Population *Estimated based on expected pregnant population by total population.*
- 2.3%** Neonate *Estimated based on total live births by total population.*

8.38% Elderly

46,529 Differently abled

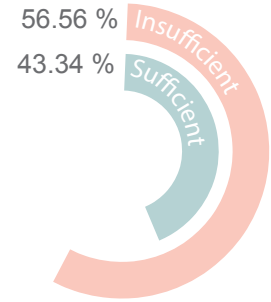
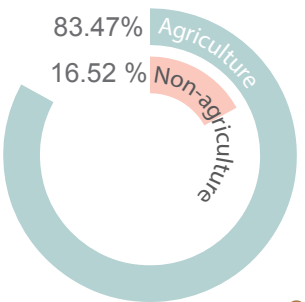
46,529

38,747

Icons : <https://thenounproject.com/>

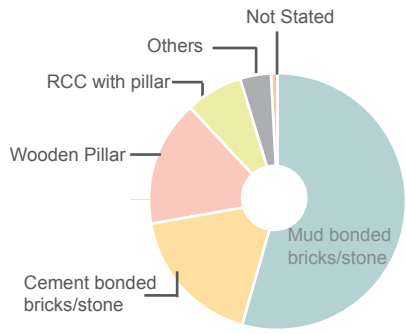
FOOD

Income source of the household

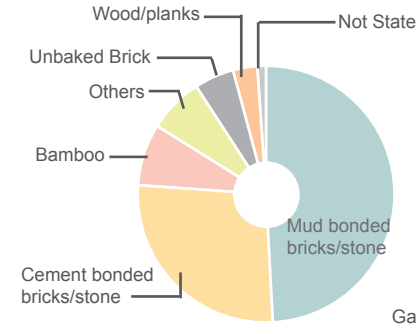


Sufficiency of agriculture product for household consumption

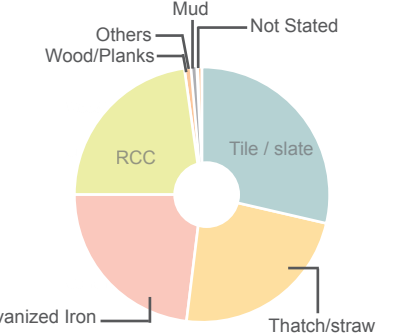
SHELTER



Type of House Foundation



Type of Outer Wall



Type of Roof

EDUCATION

Total Primary Schools	Total Secondary Schools	Teachers	Total Students	Literacy Rate %
5,767	4,397	53,923	1,340,571	75.50
				58.33

Sources

Population/WASH/Differently able/Elderly/Shelter: Province Summary Population Census 2011

Human Development/Education: Government Facility (2018) 'Federal Nepal-The Provinces : Comparative analysis of Economic and Administrative Data and Challenges (Nepal Human Development Report, 2014 & Population Monograph of Nepal Volume II, 2014 ; Flash Report 20 16/17, DoE

Vulnerable (Neonate, Pregnant & Lactating) : Calculated from Annual Report, DoHS (2016/17)

Note* : This is a living document. We will be continuously editing and updating with revisions.