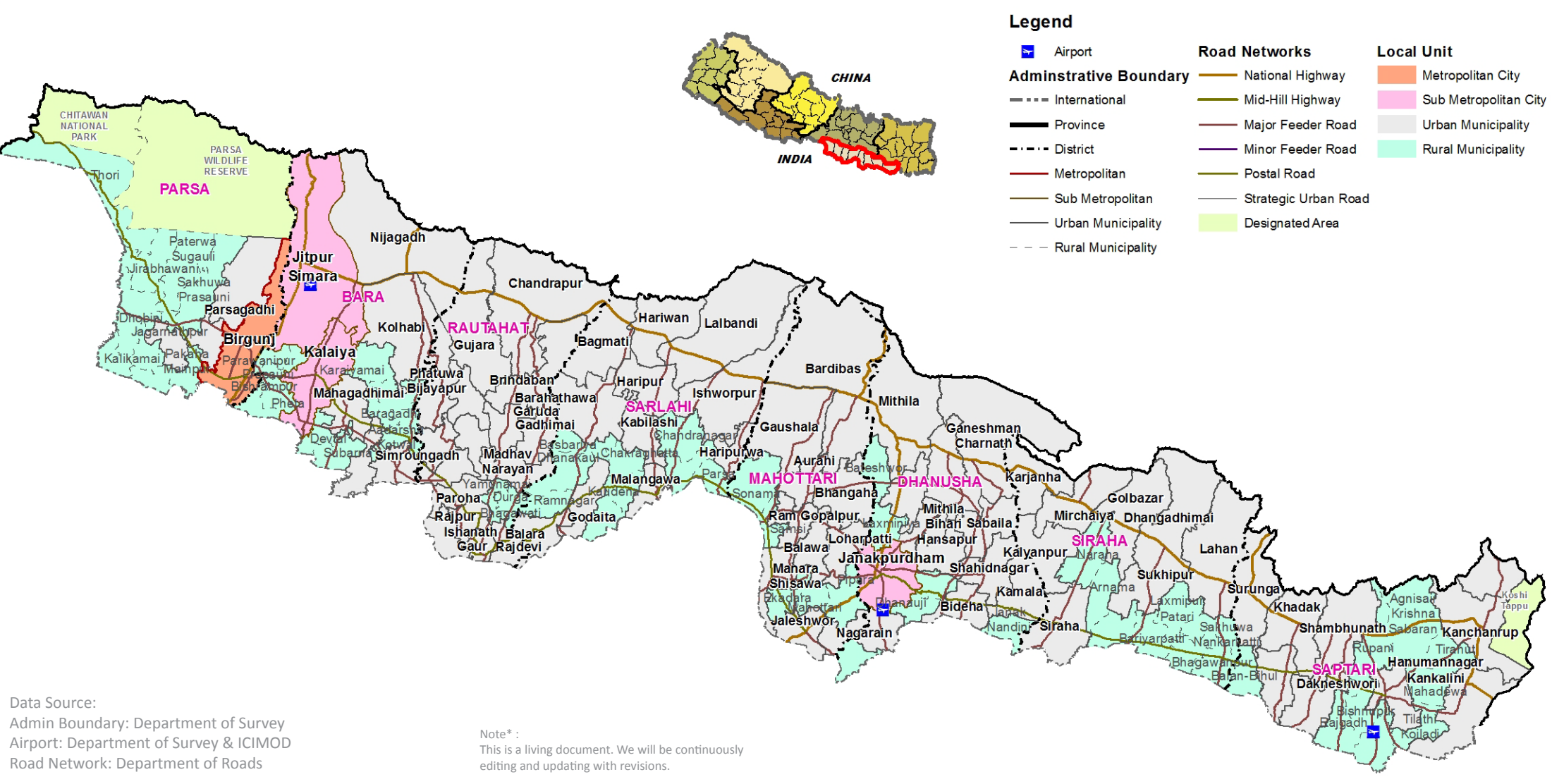


Administrative Boundary



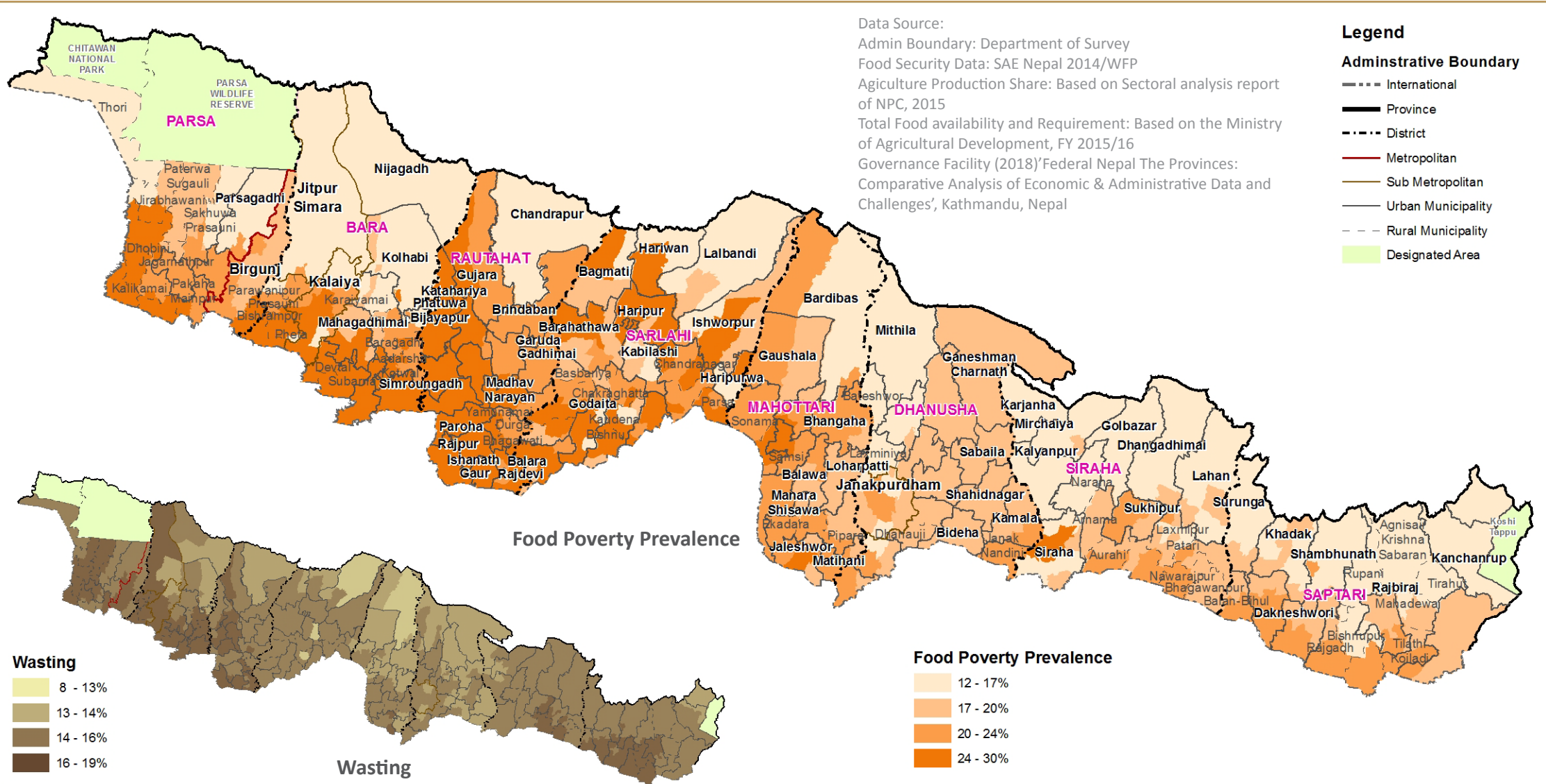
Data Source:
 Admin Boundary: Department of Survey
 Airport: Department of Survey & ICIMOD
 Road Network: Department of Roads

Note*:
 This is a living document. We will be continuously editing and updating with revisions.

8	Districts	1	Metropolitan City	73	Urban Municipalities	59	Rural Municipalities	Designated Areas
		3	Sub-Metropolitan Cities					- Chitawan National Park - Parsa Wildlife Reserve - Koshi Tappu Wildlife Reserve

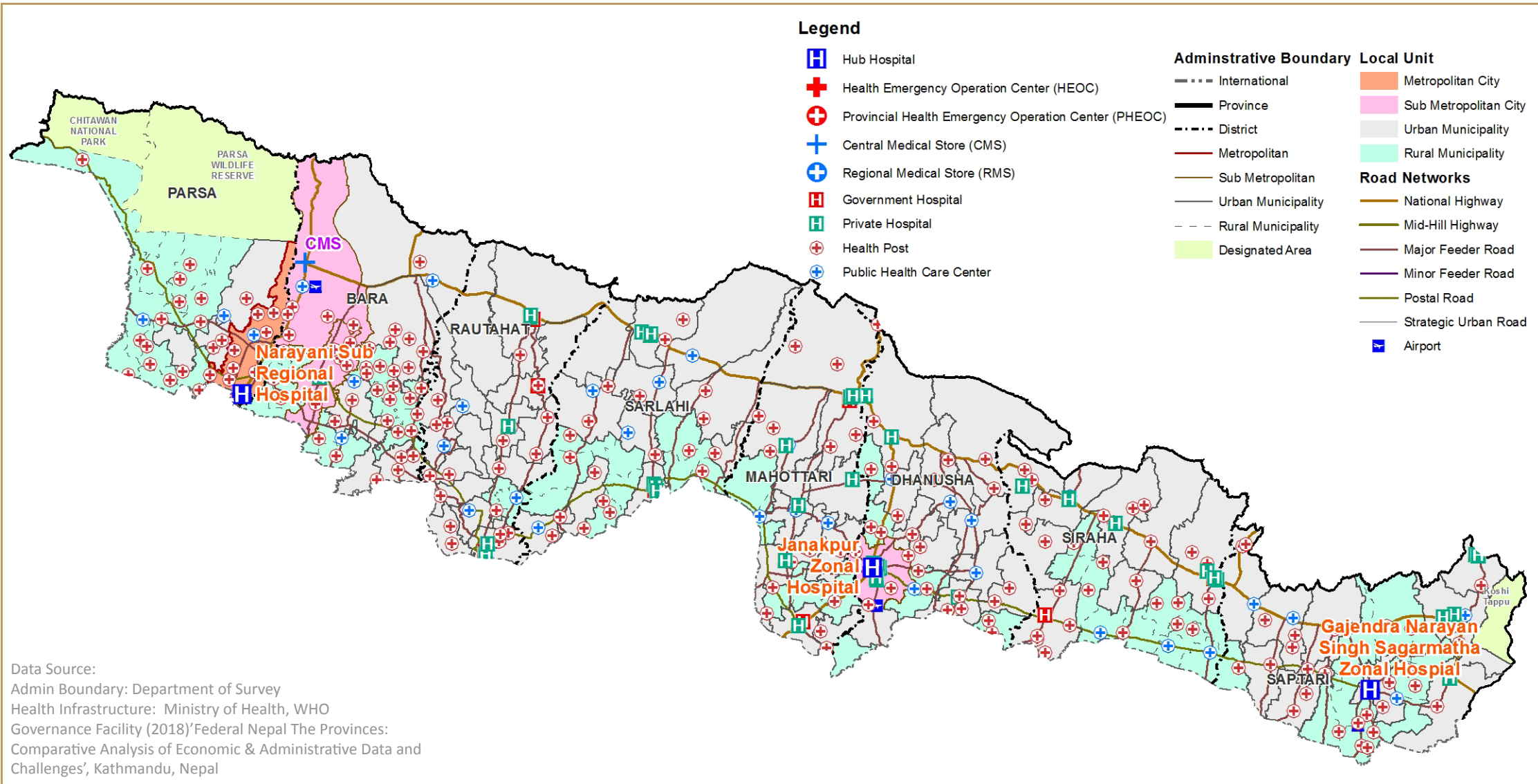


Food & Nutrition



Agriculture Production Share **12.74%** 948,640 Mt Total Available Food
 1,060,488 Mt Food Requirement

Health Services



Total Public Health Facilities

820

168

Non-Public Health Facilities

3 Hub Hospitals

13 Hospitals (Public)

1 Central Medical Store

32 Primary Health Centres

745 Health Posts

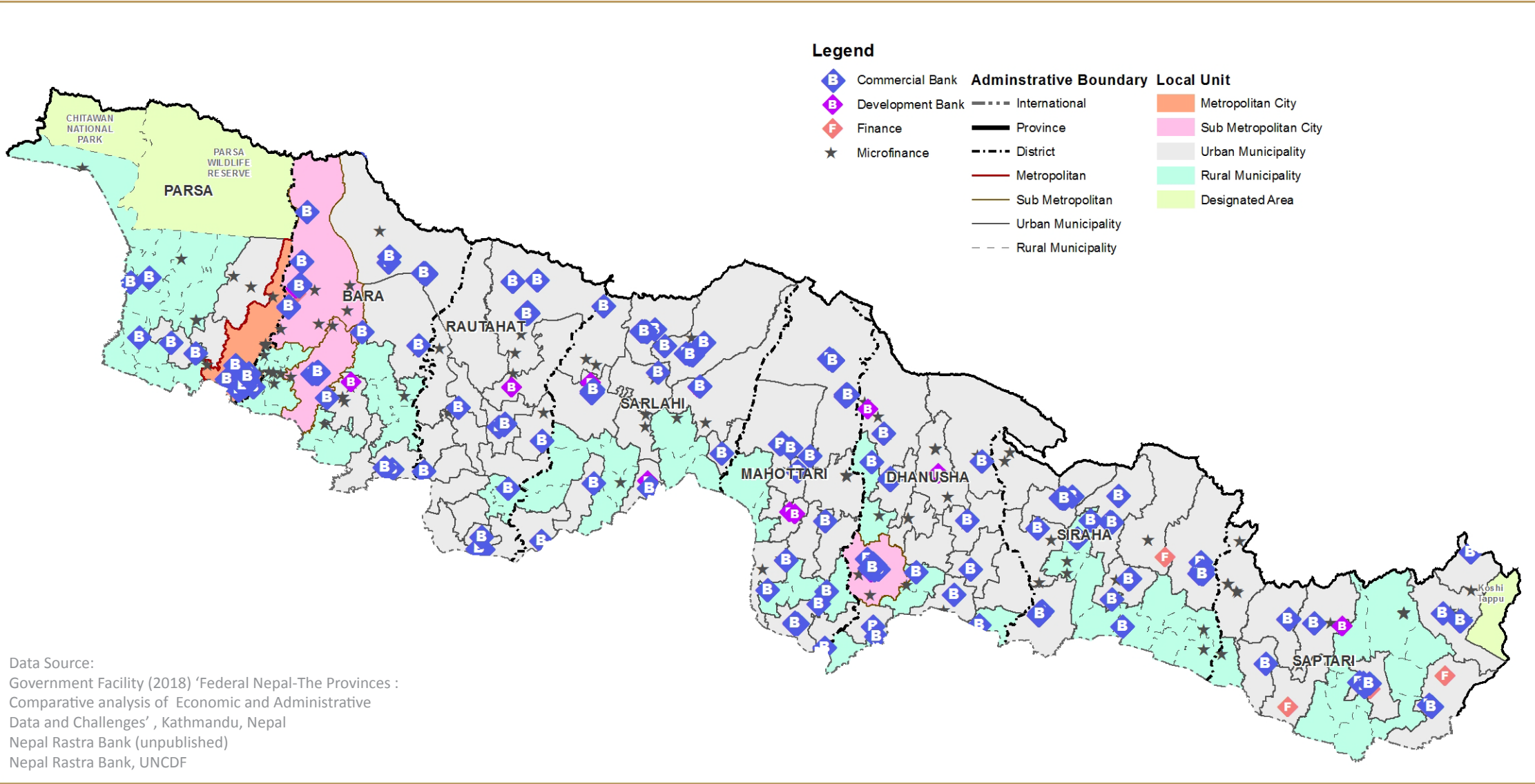
17 Urban Health Centres

5 Community Health Units

8 Other Health Facilities



Financial Services

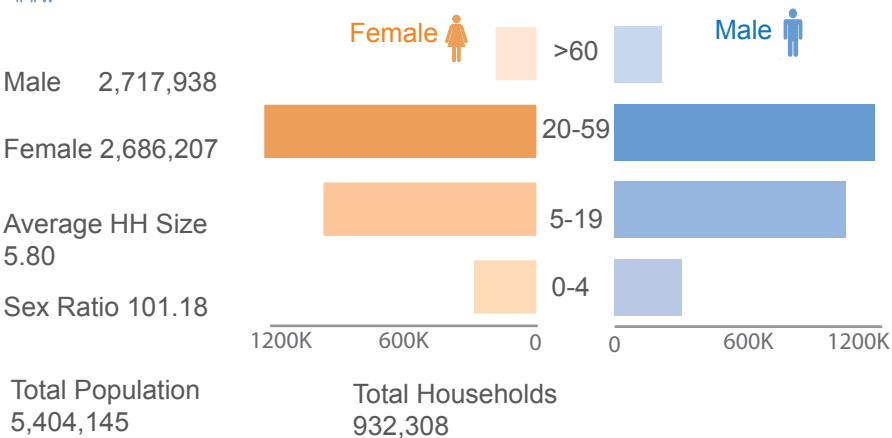


Data Source:
 Government Facility (2018) 'Federal Nepal-The Provinces : Comparative analysis of Economic and Administrative Data and Challenges', Kathmandu, Nepal
 Nepal Rastra Bank (unpublished)
 Nepal Rastra Bank, UNCDF

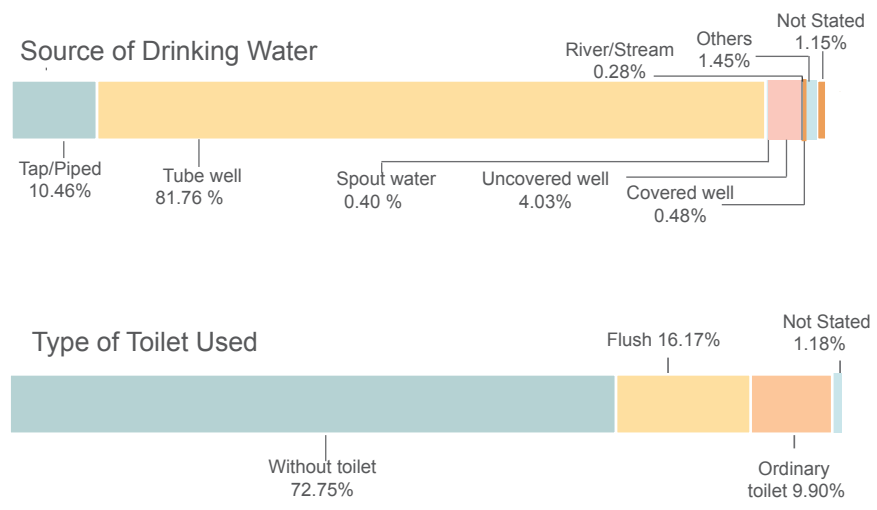
Total Financial Institutions	240 Commercial Banks	8 Finance Companies	20,937 Population per Branch
285	37 Development Banks		

as of June 2019

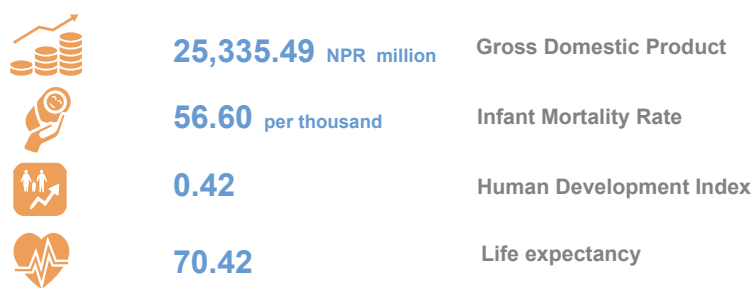
POPULATION



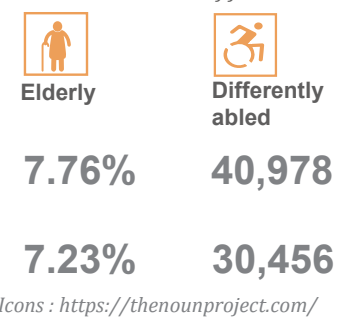
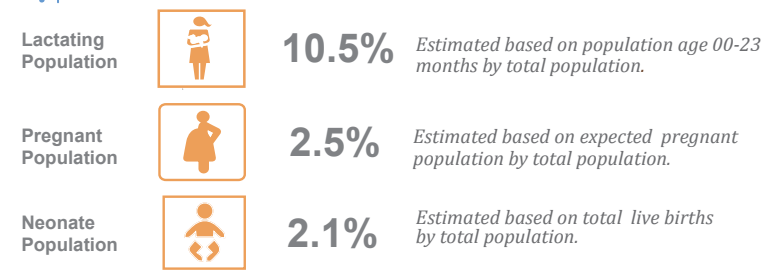
WATER AND SANITATION



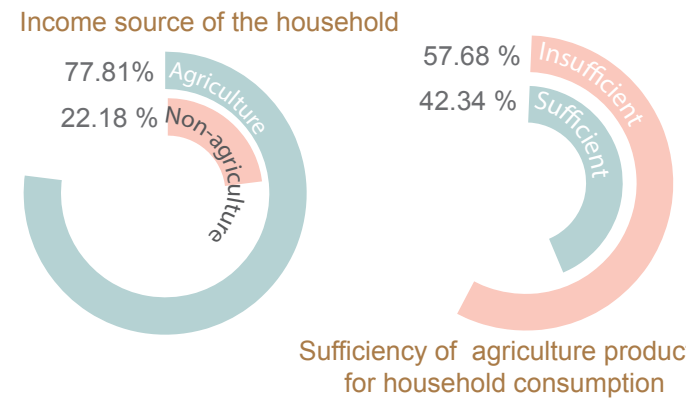
HUMAN DEVELOPMENT INDICATORS



VULNERABLE GROUPS



FOOD



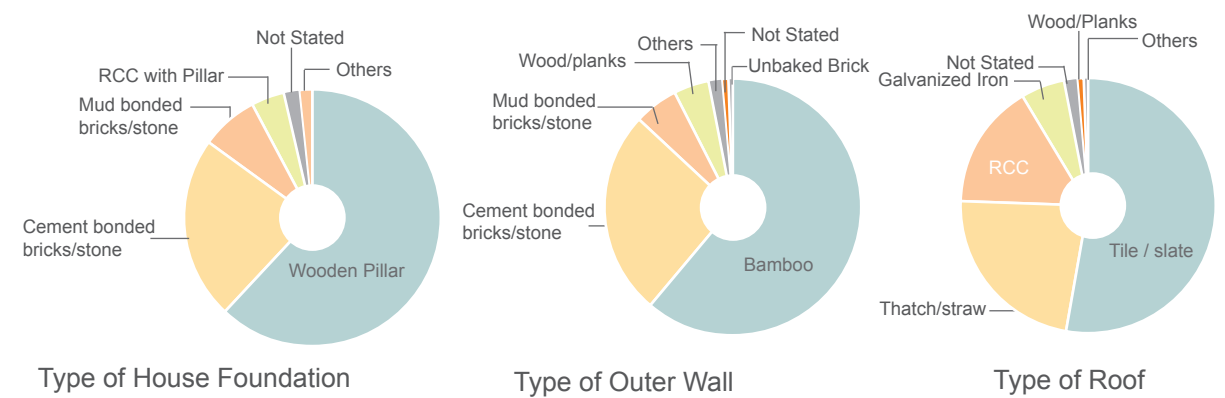
Sources

Population/WASH/Differently able/Elderly/Shelter:
Province Summary Population Census 2011

Human Development/Education:
Government Facility (2018) 'Federal Nepal-The Provinces : Comparative analysis of Economic and Administrative Data and Challenges (Nepal Human Development Report, 2014 & Population Monograph of Nepal Volume II, 2014 ; Flash Report 20 16/17, DoE

Vulnerable (Neonate, Pregnant & Lactating) :
Calculated from Annual Report, DoHS (2016/17)

SHELTER



EDUCATION

