

Administrative Boundary



- Legend**
- Airport
 - Administrative Boundary**
 - International
 - Province
 - District
 - Metropolitan
 - Sub Metropolitan
 - Urban Municipality
 - Rural Municipality
 - Local Unit**
 - Metropolitan City
 - Sub Metropolitan City
 - Urban Municipality
 - Rural Municipality
 - Designated Area
 - Road Networks**
 - National Highway
 - Mid-Hill Highway
 - Major Feeder Road
 - Minor Feeder Road
 - Postal Road
 - Strategic Urban Road

Data Source:
 Admin Boundary: Department of Survey
 Airport: Department of Survey & ICIMOD
 Road Network: Department of Roads

Note* :
 This is a living document. We will be continuously editing and updating with revisions.

12 Districts **4** Sub-Metropolitan Cities **32** Urban Municipalities **73** Rural Municipalities

Designated Areas

- Dhorpatan Hunting Reserve
- Banke National Park
- Bardiya National Park
- Lumbini Sanskritik Development Area



Food & Nutrition

Legend

Administrative Boundary

- International
- Province
- - - District
- Metropolitan
- Sub Metropolitan
- Urban Municipality
- - - Rural Municipality
- Designated Area

Food Poverty Prevalence

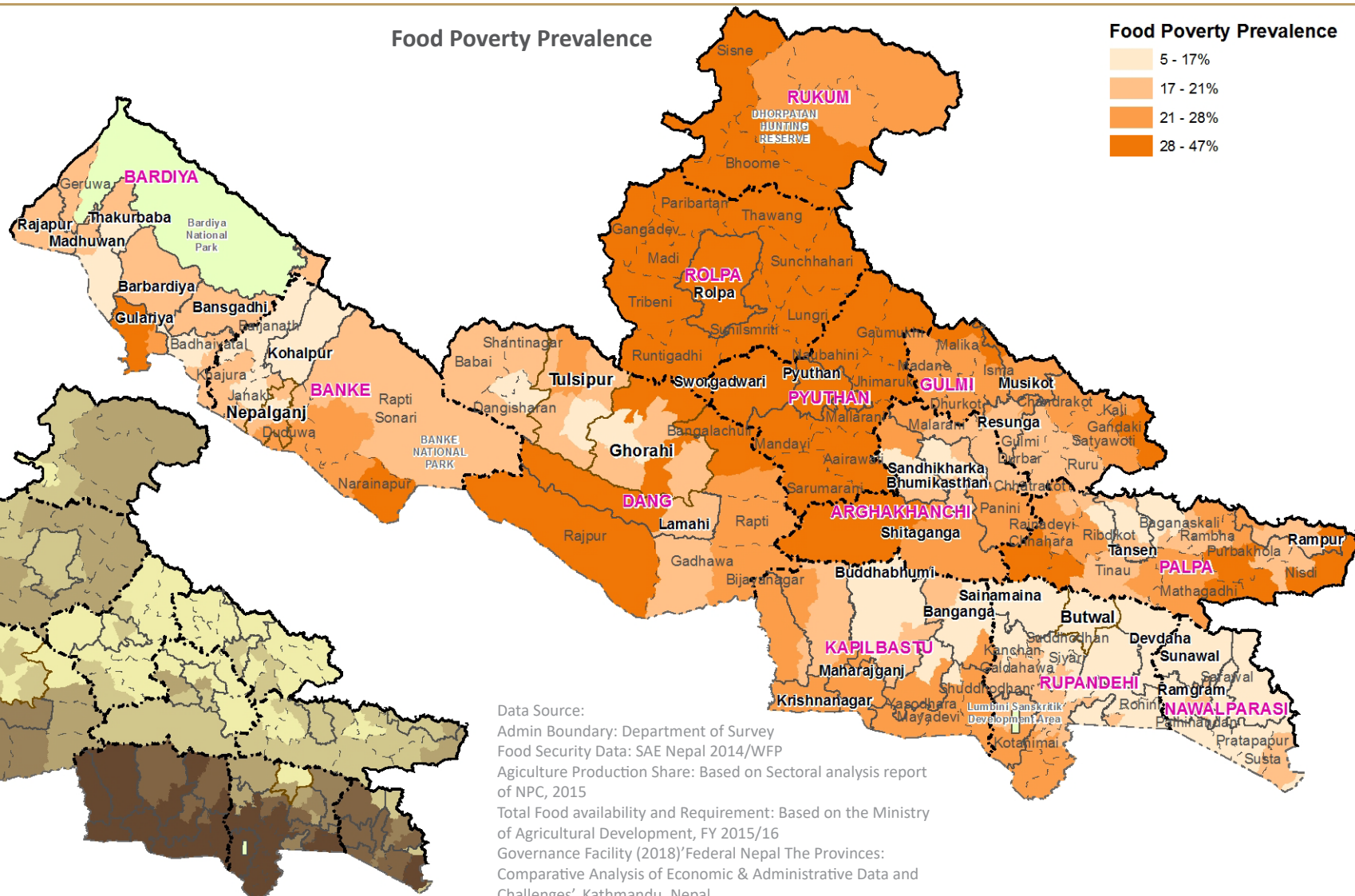
Food Poverty Prevalence

- 5 - 17%
- 17 - 21%
- 21 - 28%
- 28 - 47%

Wasting

Wasting

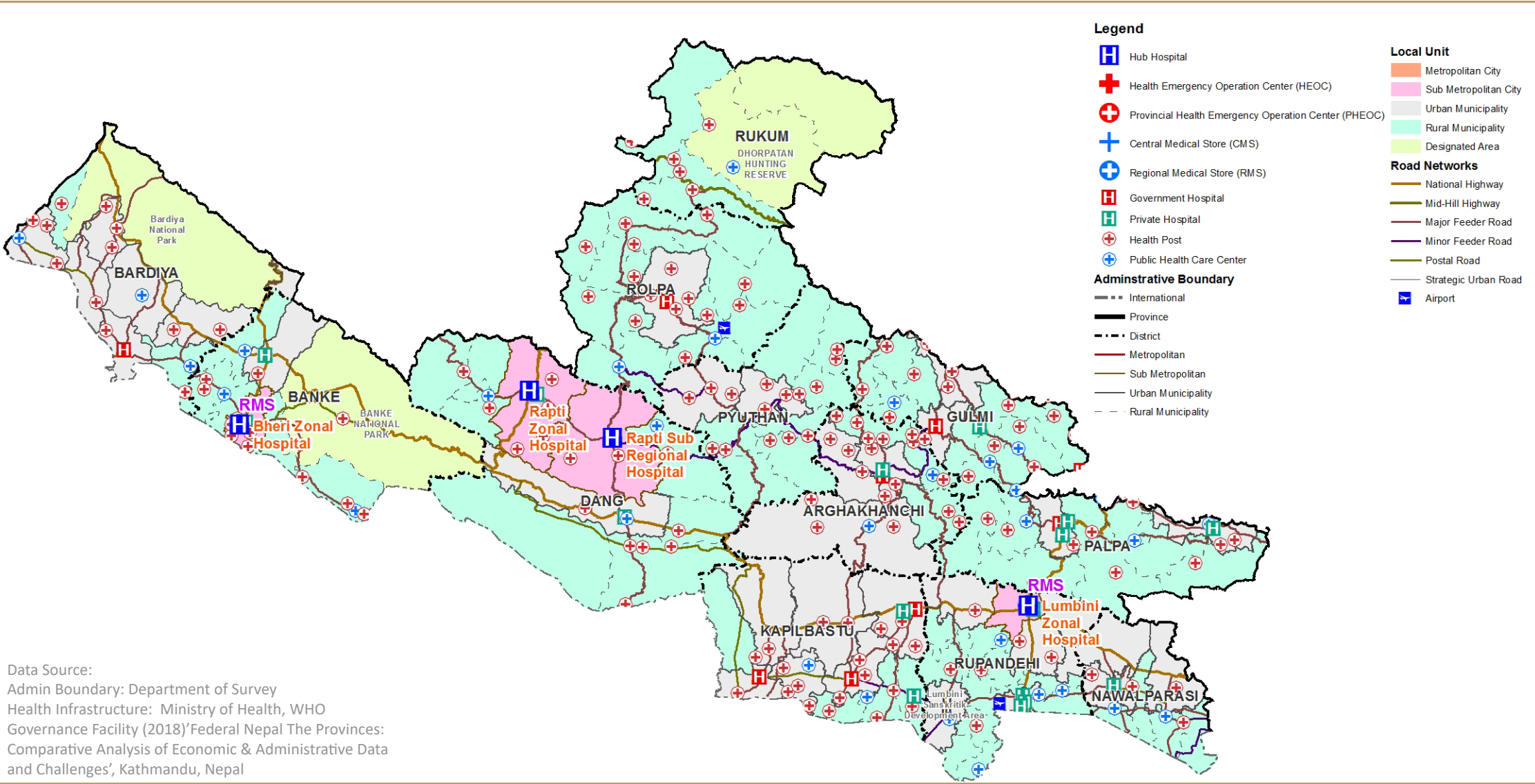
- 4 - 7%
- 7 - 10%
- 10 - 19%
- 19 - 32%



Data Source:
 Admin Boundary: Department of Survey
 Food Security Data: SAE Nepal 2014/WFP
 Agriculture Production Share: Based on Sectoral analysis report of NPC, 2015
 Total Food availability and Requirement: Based on the Ministry of Agricultural Development, FY 2015/16
 Governance Facility (2018)'Federal Nepal The Provinces: Comparative Analysis of Economic & Administrative Data and Challenges', Kathmandu, Nepal

Agriculture Production Share 17.62% 1,070,457 Mt **Total Available Food**
905,233 Mt **Food Requirement**

Health Services

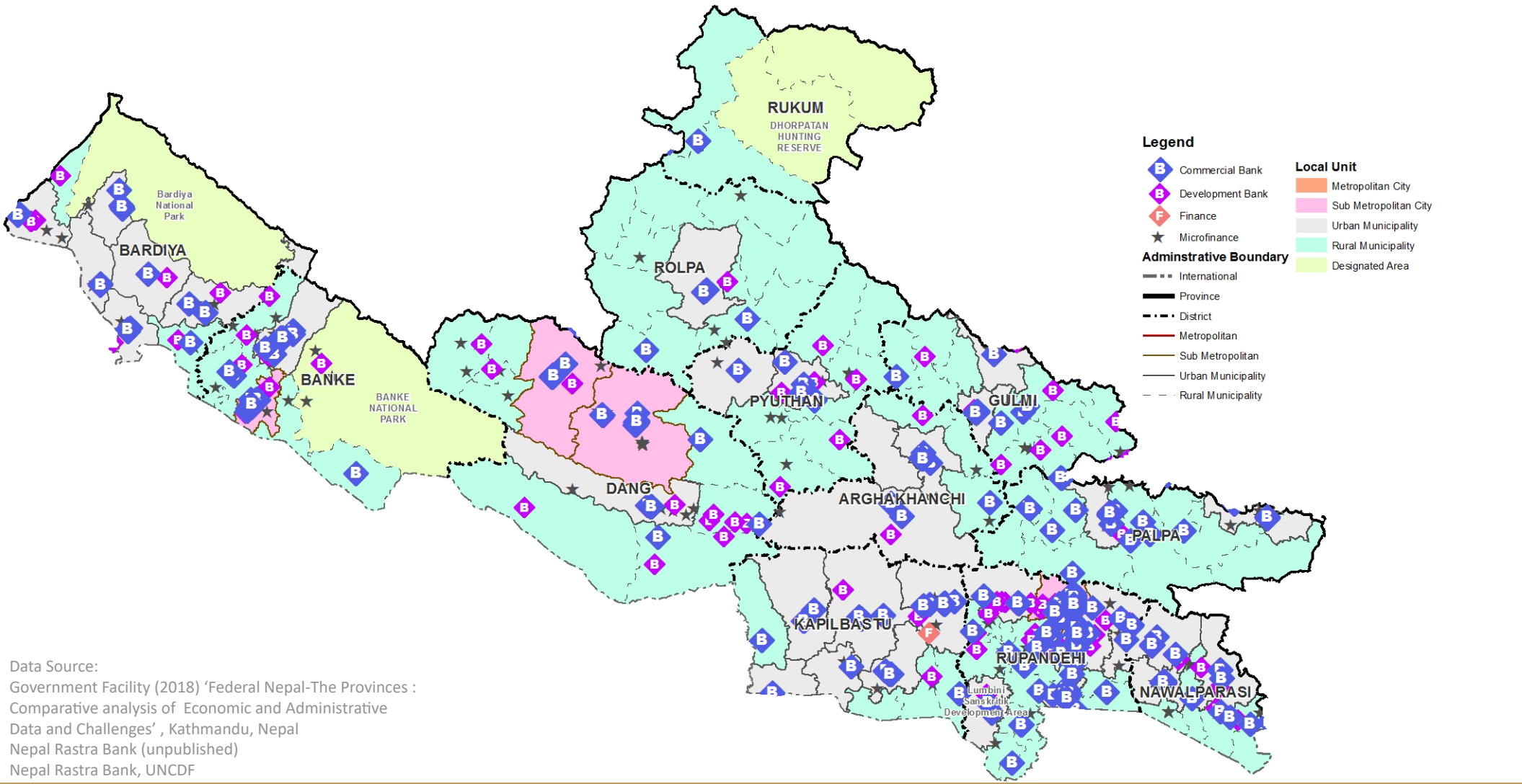


Data Source:
 Admin Boundary: Department of Survey
 Health Infrastructure: Ministry of Health, WHO
 Governance Facility (2018)'Federal Nepal The Provinces:
 Comparative Analysis of Economic & Administrative Data
 and Challenges', Kathmandu, Nepal

Total Public Health Facilities	670	4 Hub Hospitals	31 Primary Health Centres	15 Community Health Units
Non-Public Health Facilities	165	18 Hospitals (Public)	570 Health Posts	9 Other Health Facilities
		2 Regional Medical Stores	27 Urban Health Centres	



Financial Services



Data Source:
 Government Facility (2018) 'Federal Nepal-The Provinces : Comparative analysis of Economic and Administrative Data and Challenges', Kathmandu, Nepal
 Nepal Rastra Bank (unpublished)
 Nepal Rastra Bank, UNCDF

Total Financial Institutions
624

382 Commercial Banks
 218 Development Banks

24 Finance Companies
8659
 Population per Branch

