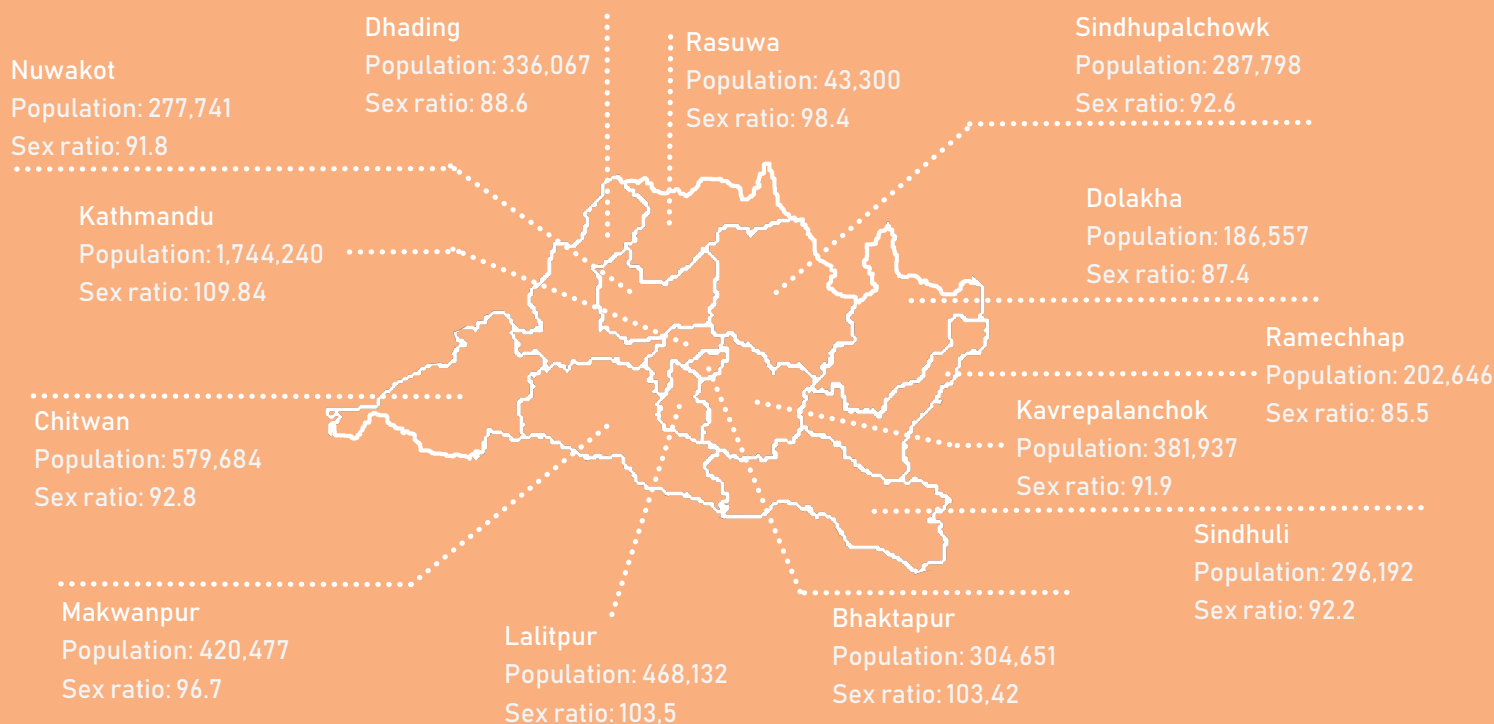


Factsheet on Women Nepal, Province 3 – Bagamati



13 Districts
33 House of Representative Constituencies
66 Provincial Constituencies
119 Local bodies
1,121 Wards

Source: Ministry of Federal Affairs and General Administration, Election Commission of Nepal



Female headed-households ¹

District	Number of households	Percentage
Sindhuli	14,148	25%
Ramechhap	12,323	28.1%
Dolakha	15,718	34.4%
Sindhupalchok	16,037	24%
Kavrepalanchok	17,170	21.3%
Lalitpur	26,275	23.9%
Bhaktapur	15,231	22.2%
Kathmandu	121,287	27.8%
Nuwakot	12,612	21.3%
Rasuwa	2,199	22.5%
Dhading	20,548	27.82%
Makwanpur	19,422	22.6%
Chitwan	44,638	33.7%
Total/Average	337,608	26%

% of female population with disability ²

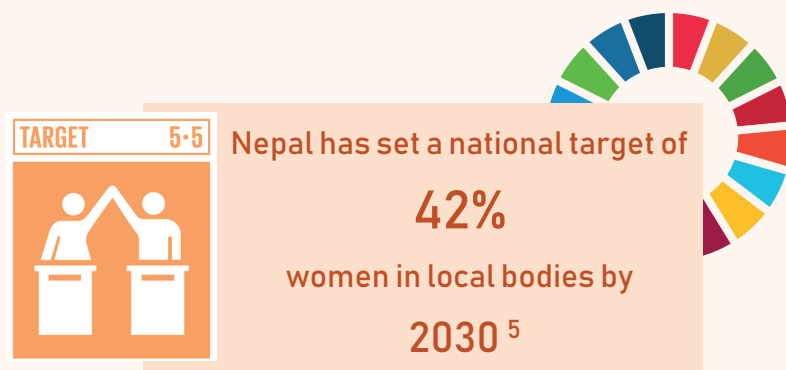
District	Percentage
Sindhuli	1.9%
Ramechhap	1.9%
Dolakha	2.7%
Sindhupalchok	2%
Kavrepalanchok	1.5%
Lalitpur	1%
Bhaktapur	1%
Kathmandu	1%
Nuwakot	1.5%
Rasuwa	2%
Dhading	2%
Makwanpur	1.8%
Chitwan	2%
Average	1.7%

% of female population aged 5 and above illiterate ³

District	Percentage
Sindhuli	44.8%
Ramechhap	42.9%
Dolakha	42.6%
Sindhupalchok	45.2%
Kavrepalanchok	36.2%
Lalitpur	23.2%
Bhaktapur	25.3%
Kathmandu	18.4%
Nuwakot	44.1%
Rasuwa	50.5%
Dhading	41.8%
Makwanpur	36.8%
Chitwan	27.3%
Average	36.8%

POLITICAL PARTICIPATION

At least
2,242
women elected as
ward members,
among whom
1,121 Dalit women, out
of 5,605 ward members⁴



1 woman mayor elected

MIGRATION ⁶



17%
of women aged 15-49
migrated in the past
10 years

82.3% within Nepal
1.9% to India
4.6% to Middle East
10.3% to others

BANK ACCOUNT ⁷



51%
of women aged 15-49
use a bank account

EDUCATION ⁸



23.3%
of women aged 15-
49 have no
education

5.3% of women aged 15-49 completed primary education
10.7% of women aged 15-49 completed secondary education
26.2% of women aged 15-49 have more than secondary education

⁴These numbers are based on the quota positions and do not include the 62 ward chairs or the 264 women elected to non-quota ward seats.

ACCESS TO TECHNOLOGY ⁹



82.7%
of women aged 15-49 own a phone



42%
of women aged 15-49 have ever used internet



Nepal has set a national target of

98%
of women aged 15-24 years
using internet by
2030¹⁰

ACCESS TO MEDIA ¹¹

23.2%

of women aged 15-49
access no media in a week



67.1%
of women aged
15-49 watch
television once
a week



20.5%
of women aged
15-49 read a
newspaper
once a week



29.4%
of women aged
15-49 listen to
the radio once a
week

OWNERSHIP OF HOUSE AND LAND ¹²



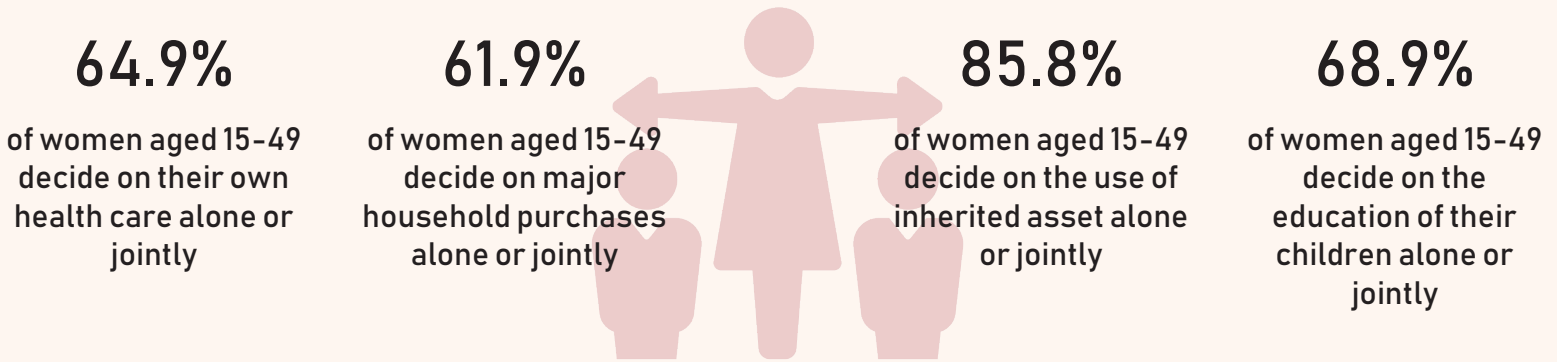
91.1%
of women aged 15-49
do not own a house

7.3% of women 15-49 own a house alone
1.3% of women 15-49 own a house jointly

86.6%
of women aged 15-49
do not own a land

9.5% of women 15-49 own land alone
3% of women 15-49 own land jointly

DECISION MAKING IN PRIVATE SPHERE ¹³



SPOUSAL SEPARATION ¹⁴

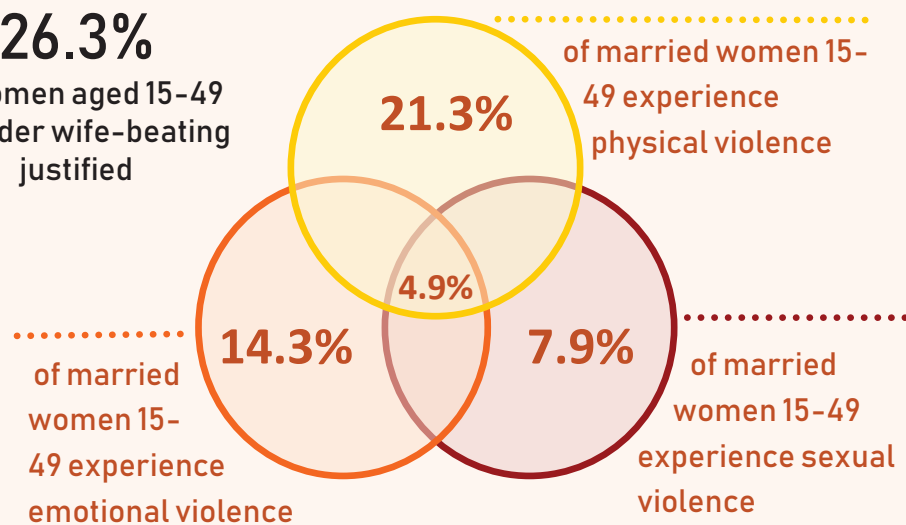


24.7%

of married women have their husband living away

SPOUSAL VIOLENCE ¹⁵

26.3%
of women aged 15-49 consider wife-beating justified



VIOLENCE AGAINST WOMEN ¹⁶



19.6%

of women aged 15-49 have experienced physical violence



7.6%

of women aged 15-49 have experienced sexual violence



60.1%

of women aged 15-49 who have ever experienced violence have never sought help nor told anyone



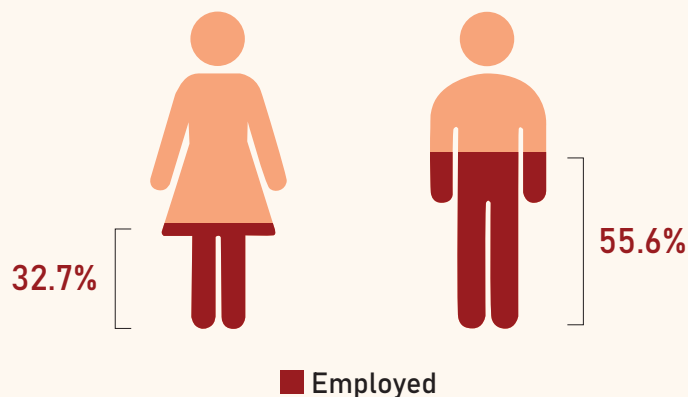
Nepal has set a national target of

6.5%

of women aged 15-49 experiencing physical/sexual violence by

2030¹⁷

EMPLOYMENT TO POPULATION RATIO ¹⁸

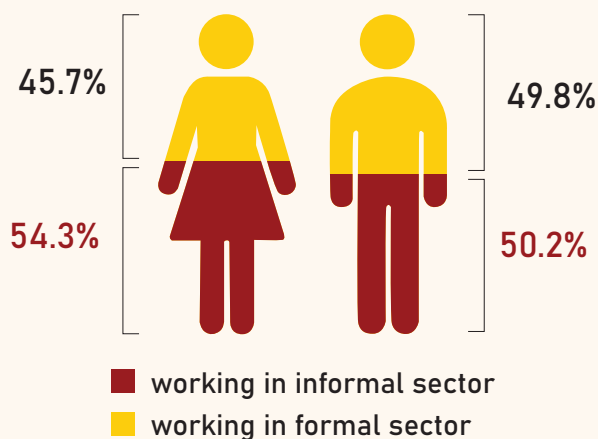


WOMEN EMPLOYMENT BY OCCUPATION ¹⁹

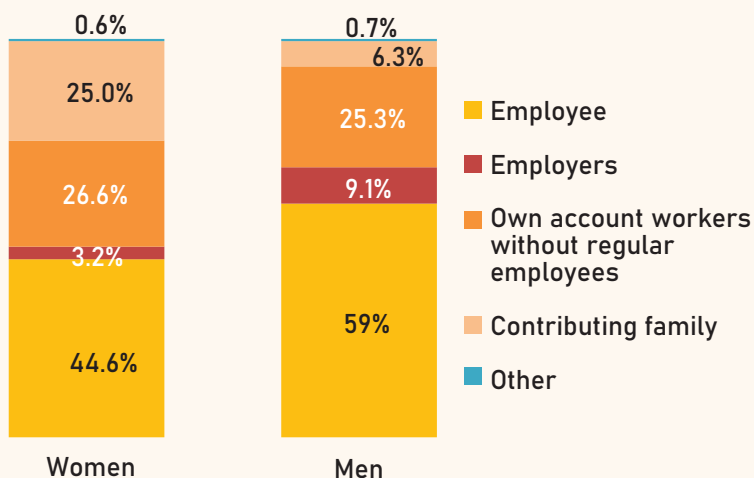


Managers	6,000
Professionals	87,000
Technicians and associate	43,000
Clerical support	42,000
Service and sales	264,000
Skilles agriculture, forestry and fishery	142,000
Crafts and related trades	109,000
Plant and machine operators	11,000
Elementary occupations	113,000
Others	1,000
Total	819,000

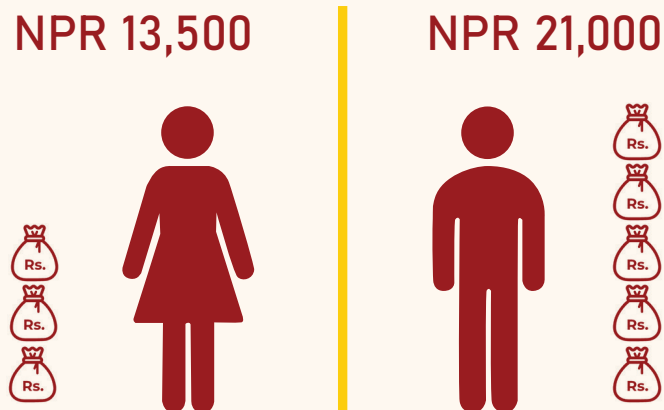
EMPLOYMENT BY SECTOR ²⁰



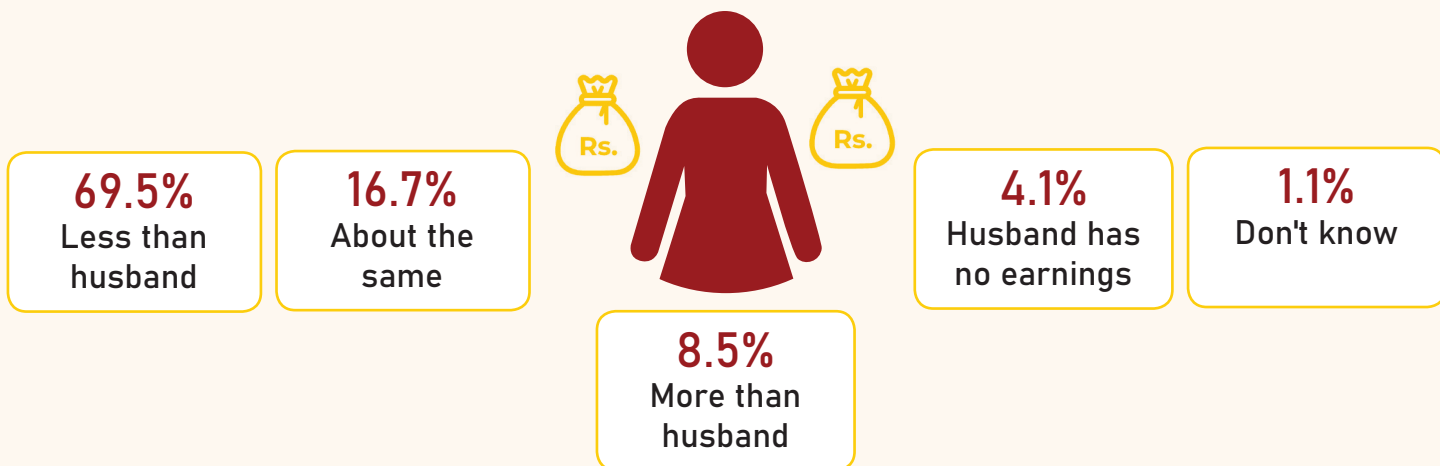
STATUS IN EMPLOYMENT ²¹



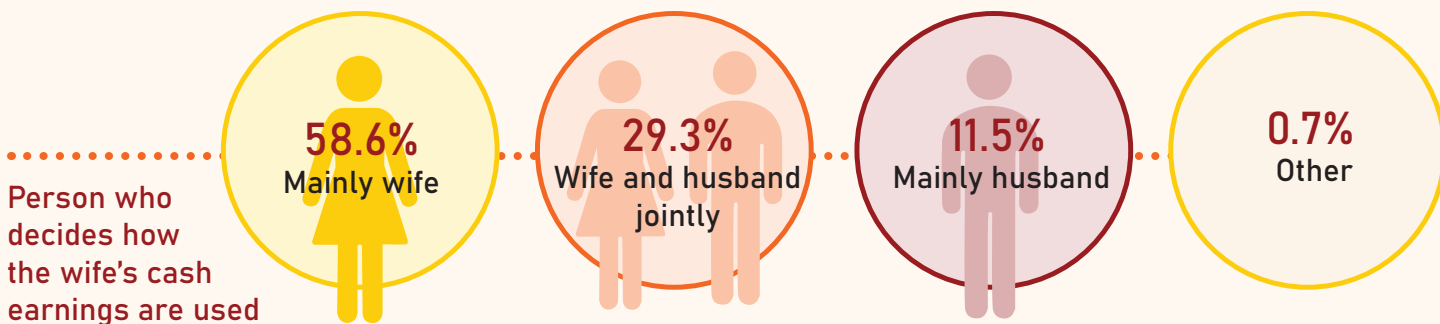
MONTHLY EARNINGS ²²



MARRIED WOMEN AGED 15-49 CASH EARNINGS COMPARED WITH HUSBAND'S CASH EARNINGS ²³



DECISION ON USE OF 15-49 MARRIED WOMEN'S CASH EARNINGS ²⁴



Source: Central Bureau of Statistics, 2012, Nepal Population and Housing Census 2011, : map at page 39, ¹page 113-114, ²page 215-216, ³page 228-229.

Ministry of Health and Population, 2017, Nepal Demographic Health Survey 2016, ⁴pages 30-31, ⁵page 322, ⁶page 52, ⁷page 322 & 60, ⁸page 56, ⁹page 315, ¹⁰page 325, ¹¹page 51, ¹²pages 327&355, ¹³pages 348, 349, 351 & 362, ¹⁴page 312-Table 15.2.1, ¹⁵page 312 Table-15.2.1.

National Planning Commission, 2017, Sustainable Development Goals: Status and Road Map 2016-2030, ¹⁶page 54, ¹⁷page 55 and ¹⁸page 53.

Report on the Nepal Force Survey 2017/2018 : ¹⁹page 13-Table 3.3, ²⁰page 90-Table 3.2, ²¹page 98-Table 3.9, ²²page 94-Table 3.5, ²³page 117-Table 3.32.

Icons: @thenounproject; @theglobalgoals



un.org.np



@UN_Nepal



facebook.com/
UnitedNationsNepal